



# INTERNATIONAL GEMOLOGICAL INSTITUTE

## DIAMOND REPORT

May 30, 2025  
IGI Report Number **694594655**  
Description **NATURAL DIAMOND**  
Shape and Cutting Style **ROUND BRILLIANT**  
Measurements **4.56 - 4.59 X 2.98 MM**

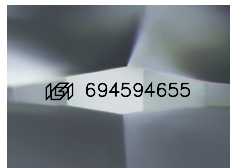
### GRADING RESULTS

Carat Weight **0.40 CARAT**  
Color Grade **J**  
Clarity Grade **VVS 1**  
Cut Grade **VERY GOOD**

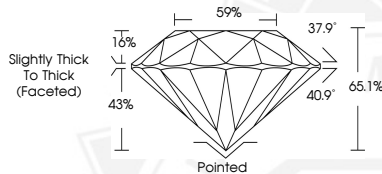
### ADDITIONAL GRADING INFORMATION

Polish **EXCELLENT**  
Symmetry **EXCELLENT**  
Fluorescence **VERY SLIGHT**  
Identification Features **PINPOINT**  
Inscription(s) **(IGI) 694594655**

ELECTRONIC COPY



Sample Image Used



May 30, 2025  
IGI Report Number **694594655**  
ROUND BRILLIANT  
NATURAL DIAMOND  
4.56 - 4.59 X 2.98 MM  
Carat Weight **0.40 CARAT**  
Color Grade **J**  
Clarity Grade **VVS 1**  
Cut Grade **VERY GOOD**  
Polish **EXCELLENT**  
Symmetry **EXCELLENT**  
Fluorescence **VERY SLIGHT**  
Inscription(s) **(IGI) 694594655**



May 30, 2025  
IGI Report Number **694594655**  
ROUND BRILLIANT  
NATURAL DIAMOND  
4.56 - 4.59 X 2.98 MM  
Carat Weight **0.40 CARAT**  
Color Grade **J**  
Clarity Grade **VVS 1**  
Cut Grade **VERY GOOD**  
Polish **EXCELLENT**  
Symmetry **EXCELLENT**  
Fluorescence **VERY SLIGHT**  
Inscription(s) **(IGI) 694594655**



THIS DOCUMENT WAS PRODUCED WITH THE FOLLOWING SECURITY MEASURES: SPECIAL DOCUMENT PAPER, INK SCREENS, WATERMARK, BACKGROUND DESIGNS, HOLOGRAM AND OTHER SECURITY FEATURES NOT LISTED AND DO EXCEED DOCUMENT SECURITY INDUSTRY GUIDELINES.

For terms & conditions and to verify this report, please visit [www.igi.org](http://www.igi.org)