



# INTERNATIONAL GEMOLOGICAL INSTITUTE

ELECTRONIC COPY



April 14, 2025

IGI Report Number 696561954

ROUND BRILLIANT

NATURAL DIAMOND

4.29 - 4.32 X 2.70 MM

Carat Weight 0.31 CARAT

Color Grade G

Clarity Grade VS 2

Cut Grade EXCELLENT

Polish EXCELLENT

Symmetry EXCELLENT

Fluorescence NONE

Inscription(s) IGI 696561954

## DIAMOND REPORT

April 14, 2025

IGI Report Number

696561954

Description

NATURAL DIAMOND

Shape and Cutting Style

ROUND BRILLIANT

Measurements

4.29 - 4.32 X 2.70 MM

## GRADING RESULTS

Carat Weight

0.31 CARAT

Color Grade

G

Clarity Grade

VS 2

Cut Grade

EXCELLENT

## ADDITIONAL GRADING INFORMATION

Polish

EXCELLENT

Symmetry

EXCELLENT

Fluorescence

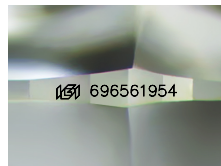
NONE

Identification Features

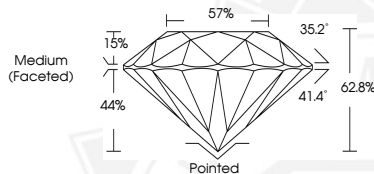
FEATHER, CLOUD

Inscription(s)

IGI 696561954



Sample Image Used



April 14, 2025

IGI Report Number 696561954

ROUND BRILLIANT

NATURAL DIAMOND

4.29 - 4.32 X 2.70 MM

Carat Weight 0.31 CARAT

Color Grade G

Clarity Grade VS 2

Cut Grade EXCELLENT

Polish EXCELLENT

Symmetry EXCELLENT

Fluorescence NONE

Inscription(s) IGI 696561954



THIS DOCUMENT WAS PRODUCED WITH THE FOLLOWING SECURITY MEASURES: SPECIAL DOCUMENT PAPER, INK SCREENS, WATERMARK, BACKGROUND DESIGN, HOLOGRAM AND OTHER SECURITY FEATURES NOT LISTED AND DO EXCEED DOCUMENT SECURITY INDUSTRY GUIDELINES.

For terms & conditions and to verify this report, please visit [www.igi.org](http://www.igi.org)