



# INTERNATIONAL GEMOLOGICAL INSTITUTE

## DIAMOND REPORT

April 17, 2025  
IGI Report Number **696562318**  
Description **NATURAL DIAMOND**  
Shape and Cutting Style **ROUND BRILLIANT**  
Measurements **4.79 - 4.83 X 3.00 MM**

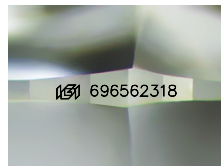
## GRADING RESULTS

Carat Weight **0.42 CARAT**  
Color Grade **E**  
Clarity Grade **INTERNALLY FLAWLESS**  
Cut Grade **EXCELLENT**

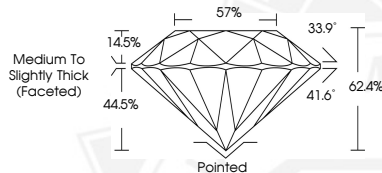
## ADDITIONAL GRADING INFORMATION

Polish **EXCELLENT**  
Symmetry **EXCELLENT**  
Fluorescence **VERY SLIGHT**  
Inscription(s) **IGI 696562318**

ELECTRONIC COPY



Sample Image Used



THIS DOCUMENT WAS PRODUCED WITH THE FOLLOWING SECURITY MEASURES: SPECIAL DOCUMENT PAPER, INK SCREENS, WATERMARK, BACKGROUND DESIGNS, HOLOGRAM AND OTHER SECURITY FEATURES NOT LISTED AND DO EXCEED DOCUMENT SECURITY INDUSTRY GUIDELINES.

For terms & conditions and to verify this report, please visit [www.igi.org](http://www.igi.org)



April 17, 2025  
IGI Report Number **696562318**  
ROUND BRILLIANT  
NATURAL DIAMOND  
4.79 - 4.83 X 3.00 MM  
Carat Weight **0.42 CARAT**  
Color Grade **E**  
Clarity Grade **I.F.**  
Cut Grade **EXCELLENT**  
Polish **EXCELLENT**  
Symmetry **EXCELLENT**  
Fluorescence **VERY SLIGHT**  
Inscription(s) **IGI 696562318**



April 17, 2025  
IGI Report Number **696562318**  
ROUND BRILLIANT  
NATURAL DIAMOND  
4.79 - 4.83 X 3.00 MM  
Carat Weight **0.42 CARAT**  
Color Grade **E**  
Clarity Grade **I.F.**  
Cut Grade **EXCELLENT**  
Polish **EXCELLENT**  
Symmetry **EXCELLENT**  
Fluorescence **VERY SLIGHT**  
Inscription(s) **IGI 696562318**