



# INTERNATIONAL GEMOLOGICAL INSTITUTE

## DIAMOND REPORT

April 16, 2025  
IGI Report Number **696563494**  
Description **NATURAL DIAMOND**  
Shape and Cutting Style **ROUND BRILLIANT**  
Measurements **4.32 - 4.40 X 2.75 MM**

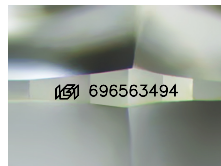
### GRADING RESULTS

Carat Weight **0.32 CARAT**  
Color Grade **H**  
Clarity Grade **SI 1**  
Cut Grade **EXCELLENT**

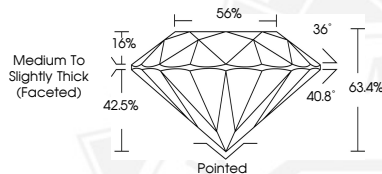
### ADDITIONAL GRADING INFORMATION

Polish **VERY GOOD**  
Symmetry **EXCELLENT**  
Fluorescence **VERY SLIGHT**  
Identification Features **CRYSTAL, FEATHER, CLOUD**  
Inscription(s) **(IGI) 696563494**

ELECTRONIC COPY



Sample Image Used



April 16, 2025  
IGI Report Number **696563494**  
ROUND BRILLIANT  
NATURAL DIAMOND  
4.32 - 4.40 X 2.75 MM  
Carat Weight **0.32 CARAT**  
Color Grade **H**  
Clarity Grade **SI 1**  
Cut Grade **EXCELLENT**  
Polish **VERY GOOD**  
Symmetry **EXCELLENT**  
Fluorescence **VERY SLIGHT**  
Inscription(s) **(IGI) 696563494**



April 16, 2025  
IGI Report Number **696563494**  
ROUND BRILLIANT  
NATURAL DIAMOND  
4.32 - 4.40 X 2.75 MM  
Carat Weight **0.32 CARAT**  
Color Grade **H**  
Clarity Grade **SI 1**  
Cut Grade **EXCELLENT**  
Polish **VERY GOOD**  
Symmetry **EXCELLENT**  
Fluorescence **VERY SLIGHT**  
Inscription(s) **(IGI) 696563494**



THIS DOCUMENT WAS PRODUCED WITH THE FOLLOWING SECURITY MEASURES: SPECIAL DOCUMENT PAPER, INK SCREENS, WATERMARK, BACKGROUND DESIGNS, HOLOGRAM AND OTHER SECURITY FEATURES NOT LISTED AND DO EXCEED DOCUMENT SECURITY INDUSTRY GUIDELINES.

For terms & conditions and to verify this report, please visit [www.igi.org](http://www.igi.org)