



# INTERNATIONAL GEMOLOGICAL INSTITUTE

## DIAMOND REPORT

April 28, 2025  
IGI Report Number **696565246**  
Description **NATURAL DIAMOND**  
Shape and Cutting Style **ROUND BRILLIANT**  
Measurements **4.26 - 4.29 X 2.70 MM**

### GRADING RESULTS

Carat Weight **0.30 CARAT**  
Color Grade **K**  
Clarity Grade **VS 2**  
Cut Grade **EXCELLENT**

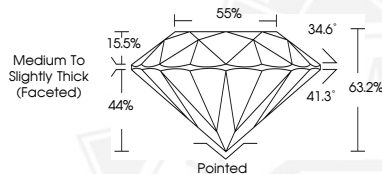
### ADDITIONAL GRADING INFORMATION

Polish **EXCELLENT**  
Symmetry **EXCELLENT**  
Fluorescence **SLIGHT**  
Identification Features **CRYSTAL**  
Inscription(s) **IGI 696565246**

ELECTRONIC COPY



Sample Image Used



April 28, 2025  
IGI Report Number **696565246**  
ROUND BRILLIANT  
NATURAL DIAMOND  
4.26 - 4.29 X 2.70 MM  
Carat Weight **0.30 CARAT**  
Color Grade **K**  
Clarity Grade **VS 2**  
Cut Grade **EXCELLENT**  
Polish **EXCELLENT**  
Symmetry **EXCELLENT**  
Fluorescence **SLIGHT**  
Inscription(s) **IGI 696565246**



April 28, 2025  
IGI Report Number **696565246**  
ROUND BRILLIANT  
NATURAL DIAMOND  
4.26 - 4.29 X 2.70 MM  
Carat Weight **0.30 CARAT**  
Color Grade **K**  
Clarity Grade **VS 2**  
Cut Grade **EXCELLENT**  
Polish **EXCELLENT**  
Symmetry **EXCELLENT**  
Fluorescence **SLIGHT**  
Inscription(s) **IGI 696565246**



THIS DOCUMENT WAS PRODUCED WITH THE FOLLOWING SECURITY MEASURES: SPECIAL DOCUMENT PAPER, INK SCREENS, WATERMARK, BACKGROUND DESIGNS, HOLOGRAM AND OTHER SECURITY FEATURES NOT LISTED AND DO EXCEED DOCUMENT SECURITY INDUSTRY GUIDELINES.

For terms & conditions and to verify this report, please visit [www.igi.org](http://www.igi.org)