



INTERNATIONAL GEMOLOGICAL INSTITUTE

ELECTRONIC COPY

DIAMOND REPORT

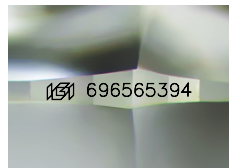
April 29, 2025
IGI Report Number **696565394**
Description **NATURAL DIAMOND**
Shape and Cutting Style **ROUND BRILLIANT**
Measurements **4.74 - 4.77 X 2.88 MM**

GRADING RESULTS

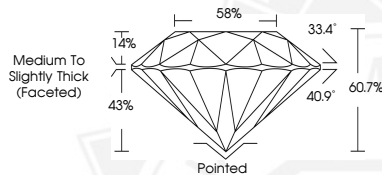
Carat Weight **0.40 CARAT**
Color Grade **J**
Clarity Grade **VS 1**
Cut Grade **EXCELLENT**

ADDITIONAL GRADING INFORMATION

Polish **EXCELLENT**
Symmetry **EXCELLENT**
Fluorescence **VERY SLIGHT**
Identification Features **FEATHER, CLOUD**
Inscription(s) **(IGI) 696565394**
Comments: IDEAL CUT ROUND BRILLIANT



Sample Image Used



April 29, 2025
IGI Report Number **696565394**
ROUND BRILLIANT
NATURAL DIAMOND
4.74 - 4.77 X 2.88 MM
Carat Weight **0.40 CARAT**
Color Grade **J**
Clarity Grade **VS 1**
Cut Grade **EXCELLENT**
Polish **EXCELLENT**
Symmetry **EXCELLENT**
Fluorescence **VERY SLIGHT**
Inscription(s) **(IGI) 696565394**
Comments: IDEAL CUT ROUND BRILLIANT



April 29, 2025
IGI Report Number **696565394**
ROUND BRILLIANT
NATURAL DIAMOND
4.74 - 4.77 X 2.88 MM
Carat Weight **0.40 CARAT**
Color Grade **J**
Clarity Grade **VS 1**
Cut Grade **EXCELLENT**
Polish **EXCELLENT**
Symmetry **EXCELLENT**
Fluorescence **VERY SLIGHT**
Inscription(s) **(IGI) 696565394**
Comments: IDEAL CUT ROUND BRILLIANT



THIS DOCUMENT WAS PRODUCED WITH THE FOLLOWING SECURITY MEASURES: SPECIAL DOCUMENT PAPER, INK SCREENS, WATERMARK, BACKGROUND DESIGNS, HOLOGRAM AND OTHER SECURITY FEATURES NOT LISTED AND DO EXCEED DOCUMENT SECURITY INDUSTRY GUIDELINES.

For terms & conditions and to verify this report, please visit www.igi.org