



# INTERNATIONAL GEMOLOGICAL INSTITUTE

ELECTRONIC COPY

## DIAMOND REPORT

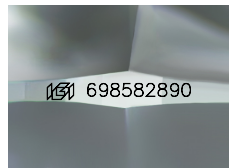
May 3, 2025  
IGI Report Number **698582890**  
Description **NATURAL DIAMOND**  
Shape and Cutting Style **ROUND BRILLIANT**  
Measurements **4.40 - 4.44 X 2.71 MM**

### GRADING RESULTS

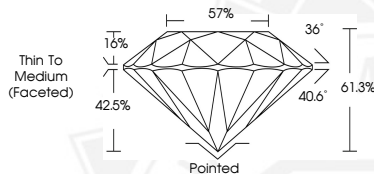
Carat Weight **0.32 CARAT**  
Color Grade **H**  
Clarity Grade **VVS 2**  
Cut Grade **EXCELLENT**

### ADDITIONAL GRADING INFORMATION

Polish **EXCELLENT**  
Symmetry **EXCELLENT**  
Fluorescence **NONE**  
Identification Features **NEEDLE, CRYSTAL**  
Inscription(s) **IGI 698582890**  
Comments: IDEAL CUT ROUND BRILLIANT



Sample Image Used



May 3, 2025  
IGI Report Number **698582890**  
ROUND BRILLIANT  
NATURAL DIAMOND  
4.40 - 4.44 X 2.71 MM  
Carat Weight **0.32 CARAT**  
Color Grade **H**  
Clarity Grade **VVS 2**  
Cut Grade **EXCELLENT**  
Polish **EXCELLENT**  
Symmetry **EXCELLENT**  
Fluorescence **NONE**  
Inscription(s) **IGI 698582890**  
Comments: IDEAL CUT ROUND BRILLIANT



May 3, 2025  
IGI Report Number **698582890**  
ROUND BRILLIANT  
NATURAL DIAMOND  
4.40 - 4.44 X 2.71 MM  
Carat Weight **0.32 CARAT**  
Color Grade **H**  
Clarity Grade **VVS 2**  
Cut Grade **EXCELLENT**  
Polish **EXCELLENT**  
Symmetry **EXCELLENT**  
Fluorescence **NONE**  
Inscription(s) **IGI 698582890**  
Comments: IDEAL CUT ROUND BRILLIANT



THIS DOCUMENT WAS PRODUCED WITH THE FOLLOWING SECURITY MEASURES: SPECIAL DOCUMENT PAPER, INK SCREENS, WATERMARK, BACKGROUND DESIGNS, HOLOGRAM AND OTHER SECURITY FEATURES NOT LISTED AND DO EXCEED DOCUMENT SECURITY INDUSTRY GUIDELINES.

For terms & conditions and to verify this report, please visit [www.igi.org](http://www.igi.org)