



# INTERNATIONAL GEMOLOGICAL INSTITUTE

## DIAMOND REPORT

May 9, 2025  
IGI Report Number **698583388**  
Description **NATURAL DIAMOND**  
Shape and Cutting Style **ROUND BRILLIANT**  
Measurements **6.17 - 6.21 X 3.89 MM**

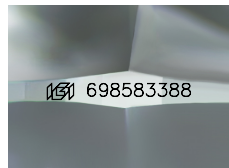
### GRADING RESULTS

Carat Weight **0.92 CARAT**  
Color Grade **G**  
Clarity Grade **INTERNALLY FLAWLESS**  
Cut Grade **EXCELLENT**

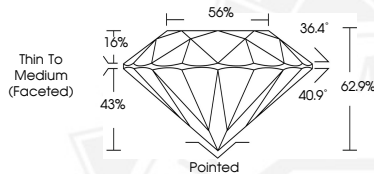
### ADDITIONAL GRADING INFORMATION

Polish **EXCELLENT**  
Symmetry **EXCELLENT**  
Fluorescence **VERY SLIGHT**  
Inscription(s) **IGI 698583388**

ELECTRONIC COPY



Sample Image Used



May 9, 2025

IGI Report Number **698583388**  
**ROUND BRILLIANT**  
**NATURAL DIAMOND**  
**6.17 - 6.21 X 3.89 MM**  
Carat Weight **0.92 CARAT**  
Color Grade **G**  
Clarity Grade **I.F.**  
Cut Grade **EXCELLENT**  
Polish **EXCELLENT**  
Symmetry **EXCELLENT**  
Fluorescence **VERY SLIGHT**  
Inscription(s) **IGI 698583388**



May 9, 2025

IGI Report Number **698583388**  
**ROUND BRILLIANT**  
**NATURAL DIAMOND**  
**6.17 - 6.21 X 3.89 MM**  
Carat Weight **0.92 CARAT**  
Color Grade **G**  
Clarity Grade **I.F.**  
Cut Grade **EXCELLENT**  
Polish **EXCELLENT**  
Symmetry **EXCELLENT**  
Fluorescence **VERY SLIGHT**  
Inscription(s) **IGI 698583388**



THIS DOCUMENT WAS PRODUCED WITH THE FOLLOWING SECURITY MEASURES: SPECIAL DOCUMENT PAPER, INK SCREENS, WATERMARK, BACKGROUND DESIGNS, HOLOGRAM AND OTHER SECURITY FEATURES NOT LISTED AND DO EXCEED DOCUMENT SECURITY INDUSTRY GUIDELINES.

For terms & conditions and to verify this report, please visit [www.igi.org](http://www.igi.org)