



# INTERNATIONAL GEMOLOGICAL INSTITUTE

ELECTRONIC COPY

## DIAMOND REPORT

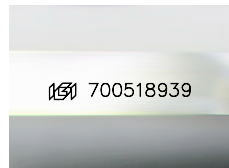
May 5, 2025  
IGI Report Number **700518939**  
Description **NATURAL DIAMOND**  
Shape and Cutting Style **PRINCESS CUT**  
Measurements **4.82 X 4.77 X 3.44 MM**

### GRADING RESULTS

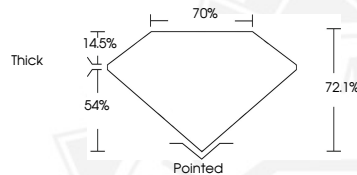
Carat Weight **0.70 CARAT**  
Color Grade **I**  
Clarity Grade **VVS 1**  
Cut Grade **VERY GOOD**

### ADDITIONAL GRADING INFORMATION

Polish **EXCELLENT**  
Symmetry **EXCELLENT**  
Fluorescence **NONE**  
Identification Features **PINPOINT**  
Inscription(s) **IGI 700518939**



Sample Image Used



May 5, 2025

IGI Report Number **700518939**

**PRINCESS CUT**

**NATURAL DIAMOND**

**4.82 X 4.77 X 3.44 MM**

Carat Weight **0.70 CARAT**

Color Grade **I**

Clarity Grade **VVS 1**

Cut Grade **VERY GOOD**

Polish **EXCELLENT**

Symmetry **EXCELLENT**

Fluorescence **NONE**

Inscription(s) **IGI 700518939**



May 5, 2025

IGI Report Number **700518939**

**PRINCESS CUT**

**NATURAL DIAMOND**

**4.82 X 4.77 X 3.44 MM**

Carat Weight **0.70 CARAT**

Color Grade **I**

Clarity Grade **VVS 1**

Cut Grade **VERY GOOD**

Polish **EXCELLENT**

Symmetry **EXCELLENT**

Fluorescence **NONE**

Inscription(s) **IGI 700518939**



THIS DOCUMENT WAS PRODUCED WITH THE FOLLOWING SECURITY MEASURES: SPECIAL DOCUMENT PAPER, INK SCREENS, WATERMARK, BACKGROUND DESIGN, HOLOGRAM AND OTHER SECURITY FEATURES NOT LISTED AND DO EXCEED DOCUMENT SECURITY INDUSTRY GUIDELINES.

For terms & conditions and to verify this report, please visit [www.igi.org](http://www.igi.org)