



**ELECTRONIC COPY**

## DIAMOND REPORT

May 6, 2025	
IGI Report Number	700546504
Description	NATURAL DIAMOND
Shape and Cutting Style	ROUND BRILLIANT
Measurements	7.30 - 7.34 X 4.55 MM

## GRADING RESULTS

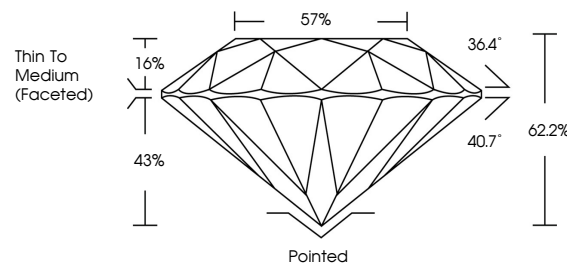
Carat Weight	1.51 CARAT
Color Grade	H
Clarity Grade	SI 1
Cut Grade	EXCELLENT

### ADDITIONAL GRADING INFORMATION

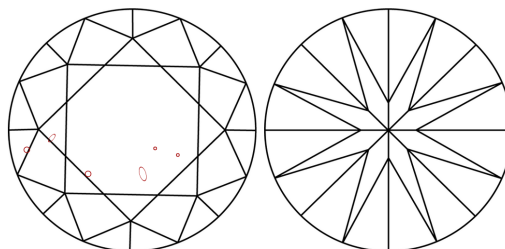
Polish	EXCELLENT
Symmetry	EXCELLENT
Fluorescence	NONE
Inscription(s)	131 700546504

700546504  
Report verification at [igi.org](http://igi.org)

## PROPORTIONS

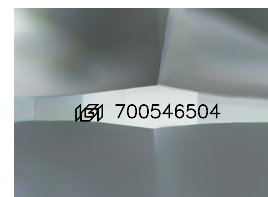


## CLARITY CHARACTERISTICS



## KEY TO SYMBOLS

Red symbols indicate internal characteristics.  
Green symbols indicate external characteristics.



Sample Image Used

**COLOR**

D - F	G - J	K - M	N - R	S - Z	FANCY
Colorless	Near Colorless	Slightly Tinted	Very Light Color	Light Color	

## CLARITY

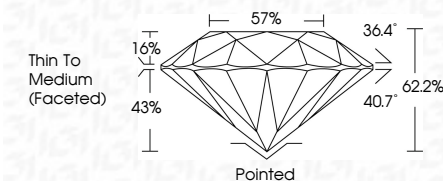
IF	VVS <sup>1-2</sup>	VS <sup>1-2</sup>	SI <sup>1-2</sup>	I <sup>1-3</sup>
Internally Flawless	Very Very Slightly Included	Very Slightly Included	Slightly Included	Included



May 6, 2025	
IGI Report Number	700546504
Description	NATURAL DIAMOND
Shape and Cutting Style	ROUND BRILLIANT
Measurements	7.30 - 7.34 X 4.55 MM

## GRADING RESULTS

Carat Weight	1.51 CARAT
Color Grade	H
Clarity Grade	SI 1
Cut Grade	EXCELLENT



### ADDITIONAL GRADING INFORMATION

Polish	EXCELLENT
Symmetry	EXCELLENT
Fluorescence	NONE
Inscription(s)	(13) 700546504



© IGI 2020, International Gemological Institute

FD - 10 20

**www.igi.org**



THIS DOCUMENT WAS PRODUCED WITH THE FOLLOWING SECURITY MEASURES: SPECIAL DOCUMENT PAPER, INK SCREENS, WATERMARK, BACKGROUND DESIGNS, HOLOGRAM AND OTHER SECURITY FEATURES NOT LISTED AND DO EXCEED DOCUMENT SECURITY INDUSTRY GUIDELINE

May 6, 2025  
GI Report No 700546504  
ROUND BRILLIANT

1.30 - 7.34 X 4.55 MM	1.51 CARAT	1.51 CARAT	1.51 CARAT
Color Grade	Clarity Grade	Cut Grade	Depth
			Table
			Girdle
			Polish
			Symmetry
			Fluorescence
			Inscriptions (if any)
			Thin To Medium (Faceted)
			Pointed
			EXCELLENT
			EXCELLENT
			NONE
			near 70754574