



# INTERNATIONAL GEMOLOGICAL INSTITUTE

## DIAMOND REPORT

April 25, 2025  
IGI Report Number **700550746**  
Description **NATURAL DIAMOND**  
Shape and Cutting Style **ROUND BRILLIANT**  
Measurements **4.41 - 4.44 X 2.65 MM**

### GRADING RESULTS

Carat Weight **0.32 CARAT**  
Color Grade **D**  
Clarity Grade **INTERNALLY FLAWLESS**  
Cut Grade **EXCELLENT**

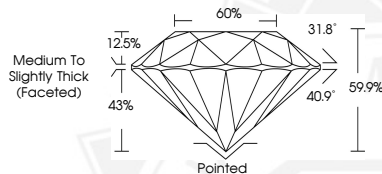
### ADDITIONAL GRADING INFORMATION

Polish **EXCELLENT**  
Symmetry **EXCELLENT**  
Fluorescence **VERY SLIGHT**  
Inscription(s) **IGI 700550746**

ELECTRONIC COPY



Sample Image Used



April 25, 2025  
IGI Report Number **700550746**  
ROUND BRILLIANT  
NATURAL DIAMOND  
4.41 - 4.44 X 2.65 MM  
Carat Weight **0.32 CARAT**  
Color Grade **D**  
Clarity Grade **I.F.**  
Cut Grade **EXCELLENT**  
Polish **EXCELLENT**  
Symmetry **EXCELLENT**  
Fluorescence **VERY SLIGHT**  
Inscription(s) **IGI 700550746**



April 25, 2025  
IGI Report Number **700550746**  
ROUND BRILLIANT  
NATURAL DIAMOND  
4.41 - 4.44 X 2.65 MM  
Carat Weight **0.32 CARAT**  
Color Grade **D**  
Clarity Grade **I.F.**  
Cut Grade **EXCELLENT**  
Polish **EXCELLENT**  
Symmetry **EXCELLENT**  
Fluorescence **VERY SLIGHT**  
Inscription(s) **IGI 700550746**



THIS DOCUMENT WAS PRODUCED WITH THE FOLLOWING SECURITY MEASURES: SPECIAL DOCUMENT PAPER, INK SCREENS, WATERMARK, BACKGROUND DESIGNS, HOLOGRAM AND OTHER SECURITY FEATURES NOT LISTED AND DO EXCEED DOCUMENT SECURITY INDUSTRY GUIDELINES.

For terms & conditions and to verify this report, please visit [www.igi.org](http://www.igi.org)