



# INTERNATIONAL GEMOLOGICAL INSTITUTE

ELECTRONIC COPY

## DIAMOND REPORT

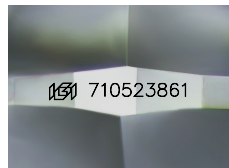
May 24, 2025  
IGI Report Number **710523861**  
Description **NATURAL DIAMOND**  
Shape and Cutting Style **ROUND BRILLIANT**  
Measurements **5.06 - 5.09 X 3.15 MM**

### GRADING RESULTS

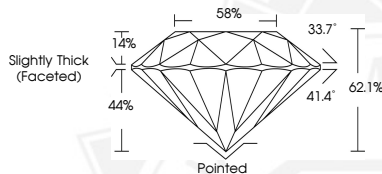
Carat Weight **0.51 CARAT**  
Color Grade **G**  
Clarity Grade **VVS 1**  
Cut Grade **EXCELLENT**

### ADDITIONAL GRADING INFORMATION

Polish **EXCELLENT**  
Symmetry **EXCELLENT**  
Fluorescence **VERY SLIGHT**  
Identification Features **CLOUD**  
Inscription(s) **IGI 710523861**



Sample Image Used



May 24, 2025  
IGI Report Number **710523861**  
ROUND BRILLIANT  
NATURAL DIAMOND  
5.06 - 5.09 X 3.15 MM  
Carat Weight **0.51 CARAT**  
Color Grade **G**  
Clarity Grade **VVS 1**  
Cut Grade **EXCELLENT**  
Polish **EXCELLENT**  
Symmetry **EXCELLENT**  
Fluorescence **VERY SLIGHT**  
Inscription(s) **IGI 710523861**



May 24, 2025  
IGI Report Number **710523861**  
ROUND BRILLIANT  
NATURAL DIAMOND  
5.06 - 5.09 X 3.15 MM  
Carat Weight **0.51 CARAT**  
Color Grade **G**  
Clarity Grade **VVS 1**  
Cut Grade **EXCELLENT**  
Polish **EXCELLENT**  
Symmetry **EXCELLENT**  
Fluorescence **VERY SLIGHT**  
Inscription(s) **IGI 710523861**



THIS DOCUMENT WAS PRODUCED WITH THE FOLLOWING SECURITY MEASURES: SPECIAL DOCUMENT PAPER, INK SCREENS, WATERMARK, BACKGROUND DESIGN, HOLOGRAM AND OTHER SECURITY FEATURES NOT LISTED AND DO EXCEED DOCUMENT SECURITY INDUSTRY GUIDELINES.

For terms & conditions and to verify this report, please visit [www.igi.org](http://www.igi.org)