



# INTERNATIONAL GEMOLOGICAL INSTITUTE

## DIAMOND REPORT

May 27, 2025  
IGI Report Number **710523929**  
Description **NATURAL DIAMOND**  
Shape and Cutting Style **EMERALD CUT**  
Measurements **5.15 X 3.77 X 2.61 MM**

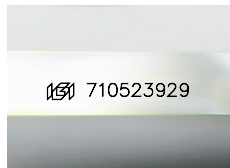
### GRADING RESULTS

Carat Weight **0.50 CARAT**  
Color Grade **H**  
Clarity Grade **VVS 1**  
Cut Grade **VERY GOOD**

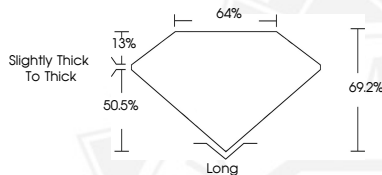
### ADDITIONAL GRADING INFORMATION

Polish **EXCELLENT**  
Symmetry **EXCELLENT**  
Fluorescence **VERY SLIGHT**  
Identification Features **FEATHER, PINPOINT**  
Inscription(s) **(IGI) 710523929**

ELECTRONIC COPY



Sample Image Used



May 27, 2025  
IGI Report Number **710523929**  
EMERALD CUT  
NATURAL DIAMOND  
5.15 X 3.77 X 2.61 MM  
Carat Weight **0.50 CARAT**  
Color Grade **H**  
Clarity Grade **VVS 1**  
Cut Grade **VERY GOOD**  
Polish **EXCELLENT**  
Symmetry **EXCELLENT**  
Fluorescence **VERY SLIGHT**  
Inscription(s) **(IGI) 710523929**



May 27, 2025  
IGI Report Number **710523929**  
EMERALD CUT  
NATURAL DIAMOND  
5.15 X 3.77 X 2.61 MM  
Carat Weight **0.50 CARAT**  
Color Grade **H**  
Clarity Grade **VVS 1**  
Cut Grade **VERY GOOD**  
Polish **EXCELLENT**  
Symmetry **EXCELLENT**  
Fluorescence **VERY SLIGHT**  
Inscription(s) **(IGI) 710523929**



THIS DOCUMENT WAS PRODUCED WITH THE FOLLOWING SECURITY MEASURES: SPECIAL DOCUMENT PAPER, INK SCREENS, WATERMARK, BACKGROUND DESIGN, HOLOGRAM AND OTHER SECURITY FEATURES NOT LISTED AND DO EXCEED DOCUMENT SECURITY INDUSTRY GUIDELINES.

For terms & conditions and to verify this report, please visit [www.igi.org](http://www.igi.org)