



# INTERNATIONAL GEMOLOGICAL INSTITUTE

## DIAMOND REPORT

July 30, 2025  
IGI Report Number 710564496  
Description NATURAL DIAMOND  
Shape and Cutting Style ROUND BRILLIANT  
Measurements 5.66 - 5.69 X 3.52 MM

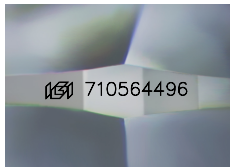
### GRADING RESULTS

Carat Weight 0.70 CARAT  
Color Grade G  
Clarity Grade VS 2  
Cut Grade EXCELLENT

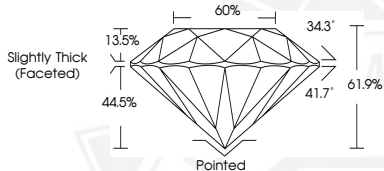
### ADDITIONAL GRADING INFORMATION

Polish EXCELLENT  
Symmetry EXCELLENT  
Fluorescence NONE  
Identification Features CLOUD  
Inscription(s) IGI 710564496

ELECTRONIC COPY



Sample Image Used



THIS DOCUMENT WAS PRODUCED WITH THE FOLLOWING SECURITY MEASURES: SPECIAL DOCUMENT PAPER, INK SCREENS, WATERMARK, BACKGROUND DESIGNS, HOLOGRAM AND OTHER SECURITY FEATURES NOT LISTED AND DO EXCEED DOCUMENT SECURITY INDUSTRY GUIDELINES.

For terms & conditions and to verify this report, please visit [www.igi.org](http://www.igi.org)



July 30, 2025

IGI Report Number 710564496

ROUND BRILLIANT

NATURAL DIAMOND

5.66 - 5.69 X 3.52 MM

Carat Weight 0.70 CARAT

Color Grade G

Clarity Grade VS 2

Cut Grade EXCELLENT

Polish EXCELLENT

Symmetry NONE

Fluorescence NONE

Inscription(s) IGI 710564496



July 30, 2025

IGI Report Number 710564496

ROUND BRILLIANT

NATURAL DIAMOND

5.66 - 5.69 X 3.52 MM

Carat Weight 0.70 CARAT

Color Grade G

Clarity Grade VS 2

Cut Grade EXCELLENT

Polish EXCELLENT

Symmetry EXCELLENT

Fluorescence NONE

Inscription(s) IGI 710564496