



INTERNATIONAL GEMOLOGICAL INSTITUTE

DIAMOND REPORT

July 6, 2025
IGI Report Number **710598049**
Description **NATURAL DIAMOND**
Shape and Cutting Style **ROUND BRILLIANT**
Measurements **5.85 - 5.90 X 3.70 MM**

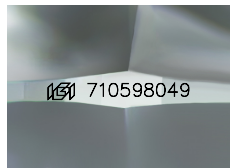
GRADING RESULTS

Carat Weight **0.79 CARAT**
Color Grade **F**
Clarity Grade **VVS 1**
Cut Grade **EXCELLENT**

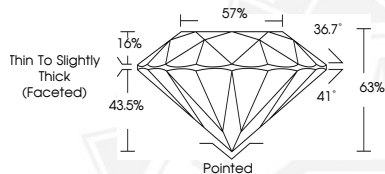
ADDITIONAL GRADING INFORMATION

Polish **EXCELLENT**
Symmetry **EXCELLENT**
Fluorescence **NONE**
Identification Features **PINPOINT**
Inscription(s) **IGI 710598049**

ELECTRONIC COPY



Sample Image Used



THIS DOCUMENT WAS PRODUCED WITH THE FOLLOWING SECURITY MEASURES: SPECIAL DOCUMENT PAPER, INK SCREENS, WATERMARK, BACKGROUND DESIGNS, HOLOGRAM AND OTHER SECURITY FEATURES NOT LISTED AND DO EXCEED DOCUMENT SECURITY INDUSTRY GUIDELINES.

For terms & conditions and to verify this report, please visit www.igi.org



July 6, 2025
IGI Report Number **710598049**
ROUND BRILLIANT
NATURAL DIAMOND
5.85 - 5.90 X 3.70 MM
Carat Weight **0.79 CARAT**
Color Grade **F**
Clarity Grade **VVS 1**
Cut Grade **EXCELLENT**
Polish **EXCELLENT**
Symmetry **EXCELLENT**
Fluorescence **NONE**
Inscription(s) **IGI 710598049**



July 6, 2025
IGI Report Number **710598049**
ROUND BRILLIANT
NATURAL DIAMOND
5.85 - 5.90 X 3.70 MM
Carat Weight **0.79 CARAT**
Color Grade **F**
Clarity Grade **VVS 1**
Cut Grade **EXCELLENT**
Polish **EXCELLENT**
Symmetry **EXCELLENT**
Fluorescence **NONE**
Inscription(s) **IGI 710598049**