



INTERNATIONAL GEMOLOGICAL INSTITUTE

DIAMOND REPORT

August 5, 2025

IGI Report Number 712519975

Description

NATURAL DIAMOND

Shape and Cutting Style

ROUND BRILLIANT

Measurements

4.36 - 4.40 X 2.73 MM

GRADING RESULTS

Carat Weight

0.32 CARAT

Color Grade

D

Clarity Grade

SI 1

Cut Grade

EXCELLENT

ADDITIONAL GRADING INFORMATION

Polish

EXCELLENT

Symmetry

EXCELLENT

Fluorescence

VERY SLIGHT

Identification Features

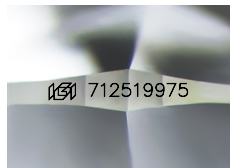
CRYSTAL

Inscription(s)

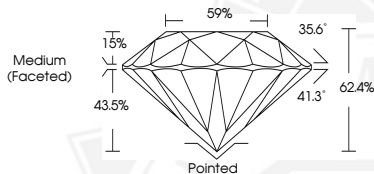
IGI 712519975

Comments: IDEAL CUT ROUND BRILLIANT

ELECTRONIC COPY



Sample Image Used



August 5, 2025

IGI Report Number 712519975

ROUND BRILLIANT

NATURAL DIAMOND

4.36 - 4.40 X 2.73 MM

Carat Weight 0.32 CARAT

Color Grade D

Clarity Grade SI 1

Cut Grade EXCELLENT

Polish EXCELLENT

Symmetry EXCELLENT

Fluorescence VERY SLIGHT

Inscription(s) IGI 712519975

Comments: IDEAL CUT ROUND

BRILLIANT



August 5, 2025

IGI Report Number 712519975

ROUND BRILLIANT

NATURAL DIAMOND

4.36 - 4.40 X 2.73 MM

Carat Weight 0.32 CARAT

Color Grade D

Clarity Grade SI 1

Cut Grade EXCELLENT

Polish EXCELLENT

Symmetry EXCELLENT

Fluorescence VERY SLIGHT

Inscription(s) IGI 712519975

Comments: IDEAL CUT ROUND

BRILLIANT



THIS DOCUMENT WAS PRODUCED WITH THE FOLLOWING SECURITY MEASURES: SPECIAL DOCUMENT PAPER, INK SCREENS, WATERMARK, BACKGROUND DESIGNS, HOLOGRAM AND OTHER SECURITY FEATURES NOT LISTED AND DO EXCEED DOCUMENT SECURITY INDUSTRY GUIDELINES.

For terms & conditions and to verify this report, please visit www.igi.org