



# INTERNATIONAL GEMOLOGICAL INSTITUTE

## DIAMOND REPORT

August 4, 2025

IGI Report Number

712520208

Description

NATURAL DIAMOND

Shape and Cutting Style

ROUND BRILLIANT

Measurements

4.73 - 4.76 X 2.91 MM

### GRADING RESULTS

Carat Weight

0.40 CARAT

Color Grade

E

Clarity Grade

VS 1

Cut Grade

EXCELLENT

### ADDITIONAL GRADING INFORMATION

Polish

EXCELLENT

Symmetry

EXCELLENT

Fluorescence

NONE

Identification Features

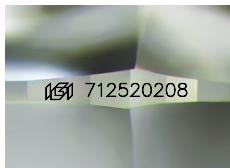
CRYSTAL, PINPOINT

Inscription(s)

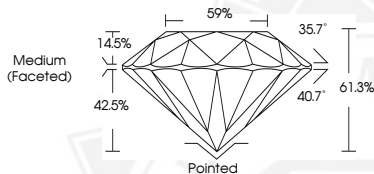
712520208

Comments: IDEAL CUT ROUND BRILLIANT

ELECTRONIC COPY



Sample Image Used



August 4, 2025

IGI Report Number 712520208

ROUND BRILLIANT

NATURAL DIAMOND

4.73 - 4.76 X 2.91 MM

Carat Weight 0.40 CARAT

Color Grade E

Clarity Grade VS 1

Cut Grade EXCELLENT

Polish EXCELLENT

Symmetry EXCELLENT

Fluorescence NONE

Inscription(s) 712520208

Comments: IDEAL CUT ROUND

BRILLIANT



August 4, 2025

IGI Report Number 712520208

ROUND BRILLIANT

NATURAL DIAMOND

4.73 - 4.76 X 2.91 MM

Carat Weight 0.40 CARAT

Color Grade E

Clarity Grade VS 1

Cut Grade EXCELLENT

Polish EXCELLENT

Symmetry EXCELLENT

Fluorescence NONE

Inscription(s) 712520208

Comments: IDEAL CUT ROUND

BRILLIANT



THIS DOCUMENT WAS PRODUCED WITH THE FOLLOWING SECURITY MEASURES: SPECIAL DOCUMENT PAPER, INK SCREENS, WATERMARK, BACKGROUND DESIGNS, HOLOGRAM AND OTHER SECURITY FEATURES NOT LISTED AND DO EXCEED DOCUMENT SECURITY INDUSTRY GUIDELINES.

For terms & conditions and to verify this report, please visit [www.igi.org](http://www.igi.org)