



ELECTRONIC COPY

DIAMOND REPORT

July 8, 2025	
IGI Report Number	713520232
Description	NATURAL DIAMOND
Shape and Cutting Style	SQUARE EMERALD CUT
Measurements	5.54 X 5.51 X 3.67 MM

GRADING RESULTS

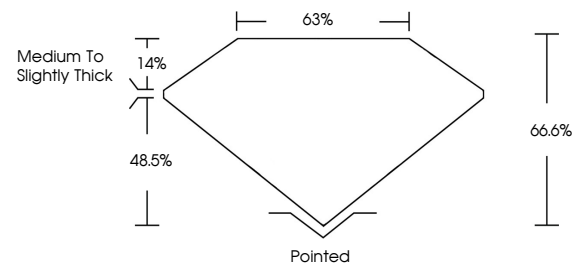
Carat Weight	1.02 CARAT
Color Grade	J
Clarity Grade	INTERNALLY FLAWLESS
Cut Grade	EXCELLENT

ADDITIONAL GRADING INFORMATION

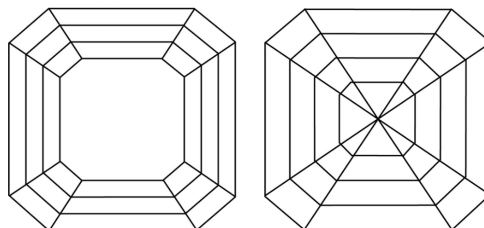
Polish	EXCELLENT
Symmetry	EXCELLENT
Fluorescence	NONE
Inscription(s)	131 713520232

713520232
Report verification at igi.org

PROPORTIONS

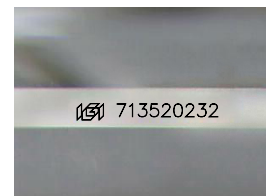


CLARITY CHARACTERISTICS



KEY TO SYMBOLS

Red symbols indicate internal characteristics.
Green symbols indicate external characteristics.



Sample Image Used

COLOR

D - F	G - J	K - M	N - R	S - Z	FANCY
Colorless	Near Colorless	Slightly Tinted	Very Light Color	Light Color	

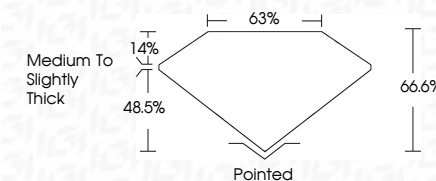
CLARITY

IF	VVS ¹⁻²	VS ¹⁻²	SI ¹⁻²	I ¹⁻³
Internally Flawless	Very Very Slightly Included	Very Slightly Included	Slightly Included	Included

DIAMOND REPORT



July 8, 2025	
IGI Report Number	713520232
Description	NATURAL DIAMOND
Shape and Cutting Style	SQUARE EMERALD CUT
Measurements	5.54 X 5.51 X 3.67 MM
GRADING RESULTS	
Carat Weight	1.02 CARAT
Color Grade	J
Clarity Grade	INTERNALLY FLAWLESS
Cut Grade	EXCELLENT



ADDITIONAL GRADING INFORMATION

Polish	EXCELLENT
Symmetry	EXCELLENT
Fluorescence	NONE
Inscription(s)	(18) 713520232



IG



© IGI 2020, International Gemological Institute

FD - 10 20

www.igi.org



THIS DOCUMENT WAS PRODUCED WITH THE FOLLOWING SECURITY MEASURES: SPECIAL DOCUMENT PAPER, INK SCREENS, WATERMARK, BACKGROUND DESIGNS, HOLOGRAM AND OTHER SECURITY FEATURES NOT LISTED AND DO EXCEED DOCUMENT SECURITY INDUSTRY GUIDELINE

July 8, 2025
GI Report No 713520232
SQUARE EMERALD CUT

5.64 X 5.61 X 5.67 MM	1.02 CARAT	J	IF	EXCELLENT	66.6%	68%	Medium To Slightly Thick	Pointed	EXCELLENT	EXCELLENT	NONE
Carat Weight		Color Grade	Clarity Grade	Cut Grade	Depth	Table	Grade	Gulet	Polish	Symmetry	Fluorescence