



ELECTRONIC COPY

DIAMOND REPORT

August 1, 2025	
IGI Report Number	713520837
Description	NATURAL DIAMOND
Shape and Cutting Style	ROUND BRILLIANT
Measurements	6.46 - 6.51 X 3.92 MM

GRADING RESULTS

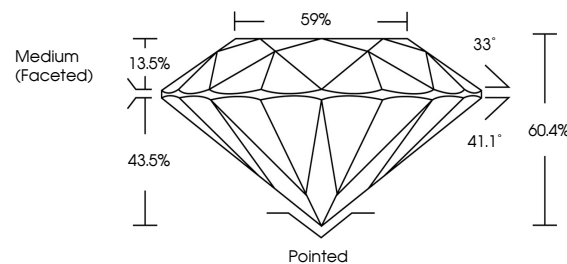
Carat Weight	1.00 CARAT
Color Grade	I
Clarity Grade	VS 1
Cut Grade	EXCELLENT

ADDITIONAL GRADING INFORMATION

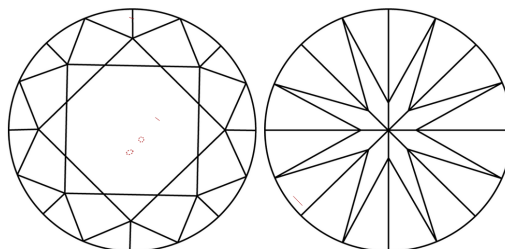
Polish	EXCELLENT
Symmetry	EXCELLENT
Fluorescence	NONE
Inscription(s)	 713520837
Comments: IDEAL CUT ROUND BRILLIANT	

713520837
Report verification at igi.org

PROPORTIONS

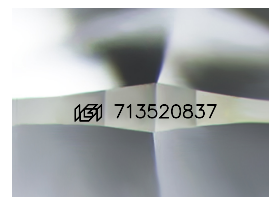


CLARITY CHARACTERISTICS



KEY TO SYMBOLS

Red symbols indicate internal characteristics.
Green symbols indicate external characteristics.



Sample Image Used

COLOR

D - F	G - J	K - M	N - R	S - Z	FANCY
Colorless	Near Colorless	Slightly Tinted	Very Light Color	Light Color	

CLARITY

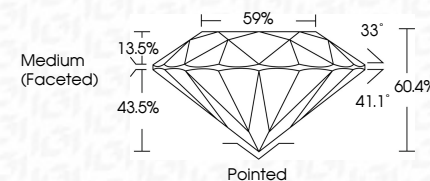
IF	WS ¹⁻²	VS ¹⁻²	SI ¹⁻²	I ¹⁻³
Internally Flawless	Very Very Slightly Included	Very Slightly Included	Slightly Included	Included



August 1, 2025	
IGI Report Number	713520837
Description	NATURAL DIAMOND
Shape and Cutting Style	ROUND BRILLIANT
Measurements	6.46 - 6.51 X 3.92 MM

GRADING RESULTS

Carat Weight	1.00 CARAT
Color Grade	I
Clarity Grade	VS 1
Cut Grade	EXCELLENT



ADDITIONAL GRADING INFORMATION

Polish	EXCELLENT
Symmetry	EXCELLENT
Fluorescence	NONE
Inscription(s)	713520837
Comments: IDEAL CUT ROUND BRILLIANT	



IG



© IGI 2020, International Gemological Institute

FD - 10 20

www.igi.org



THIS DOCUMENT WAS PRODUCED WITH THE FOLLOWING SECURITY MEASURES: SPECIAL DOCUMENT PAPER, INK SCREENS, WATERMARK, BACKGROUND DESIGNS, HOLOGRAM AND OTHER SECURITY FEATURES NOT LISTED AND DO EXCEED DOCUMENT SECURITY INDUSTRY GUIDELINE

AUGUST 1, 2025
GJ Report No 719320837
ROUND BRILLIANT
4.6 - 4.61 X 5.72 MM
Carat Weight 1.00 CARAT
Color Grade I VS 1
Clarity Grade EXCELLENT
Cut Grade EXCELLENT
Depth 60.4%
Table 59%
Grille Medium (Faceted)
Quiet Pointed
Polish EXCELLENT
Symmetry EXCELLENT
Fluorescence NONE
Inscriptions(s) (#) 719320837
Comments:
DGCL CUT ROUND BRILLIANT