



# INTERNATIONAL GEMOLOGICAL INSTITUTE

## DIAMOND REPORT

July 28, 2025  
IGI Report Number **713542014**  
Description **NATURAL DIAMOND**  
Shape and Cutting Style **ROUND BRILLIANT**  
Measurements **6.15 - 6.23 X 3.79 MM**

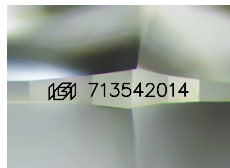
## GRADING RESULTS

Carat Weight **0.90 CARAT**  
Color Grade **F**  
Clarity Grade **VS 2**  
Cut Grade **EXCELLENT**

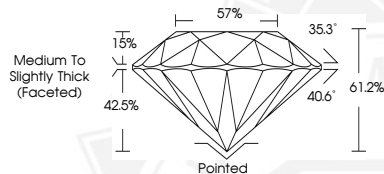
## ADDITIONAL GRADING INFORMATION

Polish **EXCELLENT**  
Symmetry **EXCELLENT**  
Fluorescence **NONE**  
Identification Features **FEATHER**  
Inscription(s) **IGI 713542014**  
Comments: IDEAL CUT ROUND BRILLIANT

ELECTRONIC COPY



Sample Image Used



THIS DOCUMENT WAS PRODUCED WITH THE FOLLOWING SECURITY MEASURES: SPECIAL DOCUMENT PAPER, INK SCREENS, WATERMARK, BACKGROUND DESIGNS, HOLOGRAM AND OTHER SECURITY FEATURES NOT LISTED AND DO EXCEED DOCUMENT SECURITY INDUSTRY GUIDELINES.

For terms & conditions and to verify this report, please visit [www.igi.org](http://www.igi.org)



July 28, 2025

IGI Report Number **713542014**

**ROUND BRILLIANT**

**NATURAL DIAMOND**

**6.15 - 6.23 X 3.79 MM**

Carat Weight **0.90 CARAT**

Color Grade **F**

Clarity Grade **VS 2**

Cut Grade **EXCELLENT**

Polish **EXCELLENT**

Symmetry **EXCELLENT**

Fluorescence **NONE**

Inscription(s) **IGI 713542014**

Comments: IDEAL CUT ROUND

**BRILLIANT**



July 28, 2025

IGI Report Number **713542014**

**ROUND BRILLIANT**

**NATURAL DIAMOND**

**6.15 - 6.23 X 3.79 MM**

Carat Weight **0.90 CARAT**

Color Grade **F**

Clarity Grade **VS 2**

Cut Grade **EXCELLENT**

Polish **EXCELLENT**

Symmetry **EXCELLENT**

Fluorescence **NONE**

Inscription(s) **IGI 713542014**

Comments: IDEAL CUT ROUND

**BRILLIANT**