



ELECTRONIC COPY

DIAMOND REPORT

| | |
|-------------------------|-----------------------|
| July 14, 2025 | |
| IGI Report Number | 713557949 |
| Description | NATURAL DIAMOND |
| Shape and Cutting Style | ROUND BRILLIANT |
| Measurements | 8.03 - 8.06 X 5.08 MM |

GRADING RESULTS

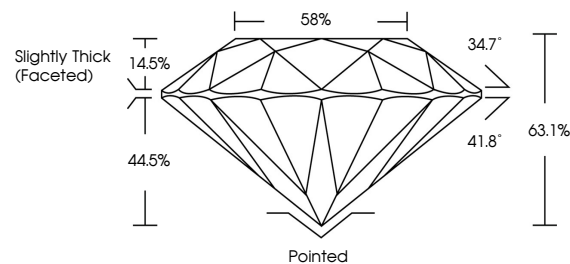
| | |
|---------------|-------------|
| Carat Weight | 2.04 CARATS |
| Color Grade | J |
| Clarity Grade | VS 1 |
| Cut Grade | EXCELLENT |

ADDITIONAL GRADING INFORMATION

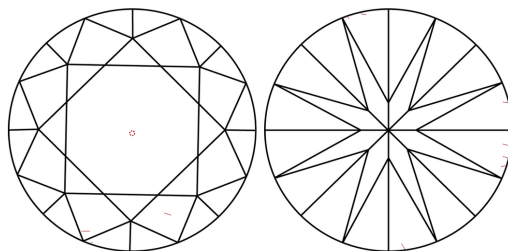
| | |
|----------------|---------------|
| Polish | EXCELLENT |
| Symmetry | EXCELLENT |
| Fluorescence | NONE |
| Inscription(s) | 131 713557949 |

713557949
Report verification at igi.org

PROPORTIONS

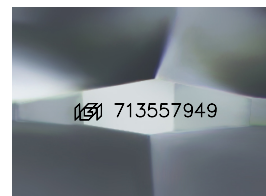


CLARITY CHARACTERISTICS



KEY TO SYMBOLS

Red symbols indicate internal characteristics.
Green symbols indicate external characteristics.



Sample Image Used

COLOR

| D - F | G - J | K - M | N - R | S - Z | FANCY |
|-----------|----------------|-----------------|------------------|-------------|-------|
| Colorless | Near Colorless | Slightly Tinted | Very Light Color | Light Color | |

CLARITY

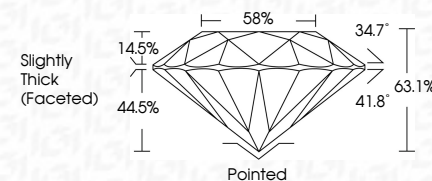
| IF | VVS ¹⁻² | VS ¹⁻² | SI ¹⁻² | I ¹⁻³ |
|---------------------|-----------------------------|------------------------|-------------------|------------------|
| Internally Flawless | Very Very Slightly Included | Very Slightly Included | Slightly Included | Included |



| | |
|-------------------------|-----------------------|
| July 14, 2025 | |
| IGI Report Number | 713557949 |
| Description | NATURAL DIAMOND |
| Shape and Cutting Style | ROUND BRILLIANT |
| Measurements | 8.03 - 8.06 X 5.08 MM |

GRADING RESULTS

| | |
|---------------|-------------|
| Carat Weight | 2.04 CARATS |
| Color Grade | J |
| Clarity Grade | VS 1 |
| Cut Grade | EXCELLENT |



ADDITIONAL GRADING INFORMATION

| | |
|----------------|----------------|
| Polish | EXCELLENT |
| Symmetry | EXCELLENT |
| Fluorescence | NONE |
| Inscription(s) | (15) 713557949 |



IG



© IGI 2020, International Gemological Institute

FD - 10 20



THIS DOCUMENT WAS PRODUCED WITH THE FOLLOWING SECURITY MEASURES: SPECIAL DOCUMENT PAPER, INK SCREENS, WATERMARK, BACKGROUND DESIGNS, HOLOGRAM AND OTHER SECURITY FEATURES NOT LISTED AND DO EXCEED DOCUMENT SECURITY INDUSTRY GUIDELINES

www.igi.org

| | | | | |
|------------------------|-------------|---------------|--------------------------|--------------|
| July 14, 2026 | 2.04 CARATS | Color Weight | VS 1 | Pointed |
| G1 Report No 711557949 | J | Color Grade | EXCELLENT | EXCELLENT |
| ROUND BRILLIANT | | Clarity Grade | 63.1% | EXCELLENT |
| | | Color | 58% | NONE |
| | | Depth | Slightly Thick (Faceted) | Fluorescence |
| | | Table | | |
| | | Girdle | | |
| | | Culet | | |
| | | Polish | | |
| | | Symmetry | | |