

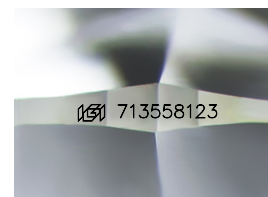
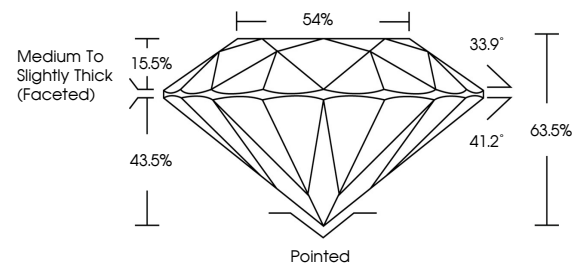


ELECTRONIC COPY

DIAMOND REPORT

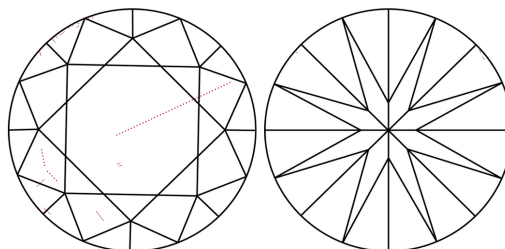
713558123
Report verification at igi.org

PROPORTIONS



Sample Image Used

CLARITY CHARACTERISTICS



KEY TO SYMBOLS

Red symbols indicate internal characteristics.
Green symbols indicate external characteristics.

COLOR

D - F	G - J	K - M	N - R	S - Z	FANCY
Colorless	Near Colorless	Slightly Tinted	Very Light Color	Light Color	

CLARITY

IF	VVS ¹⁻²	VS ¹⁻²	SI ¹⁻²	I ¹⁻³
Internally Flawless	Very Very Slightly Included	Very Slightly Included	Slightly Included	Included



July 31, 2025

IGI Report Number 713558123

Description	NATURAL DIAMOND
-------------	-----------------

Shape and Cutting Style **ROUND BRILLIANT**

Measurements 7.52 - 7.60 X 4.80 MM

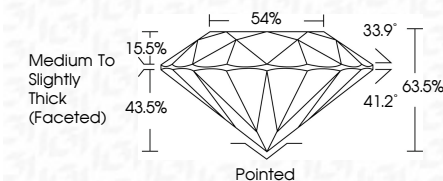
GRADING RESULTS

Carat Weight **1.70 CARAT**

Color Grade K

Clarity Grade VS 2

Cut Grade **EXCELLENT**



ADDITIONAL GRADING INFORMATION

Polish **EXCELLENT**Symmetry **EXCELLENT**Fluorescence **NONE**Inscription(s) 713558123

© IGI 2020, International Gemological Institute

FD - 10 20

www.igi.org



THIS DOCUMENT WAS PRODUCED WITH THE FOLLOWING SECURITY MEASURES: SPECIAL DOCUMENT PAPER, INK SCREENS, WATERMARK, BACKGROUND DESIGNS, HOLOGRAM AND OTHER SECURITY FEATURES NOT LISTED AND DO EXCEED DOCUMENT SECURITY INDUSTRY GUIDELINES

July 31, 2025
GI Report No 713558123
ROUND BRILLIANT

1.52 - 7.60 X 4.80 MM	Carat Weight	VS 2	1.70 CARAT
Color Grade	Clarity Grade	EXCELLENT	K
Cut Grade	Depth	63.5%	
Table	Girdle	54%	
		Medium to Slightly Thick (Faceted)	
Culet		Pointed	
Polish		EXCELLENT	
Symmetry		EXCELLENT	
Fluorescence		NONE	
Measurements (mm)			near 7.35/5.91/2.93