



ELECTRONIC COPY

DIAMOND REPORT

August 1, 2025	
IGI Report Number	713558139
Description	NATURAL DIAMOND
Shape and Cutting Style	ROUND BRILLIANT
Measurements	6.84 - 6.86 X 4.27 MM

GRADING RESULTS

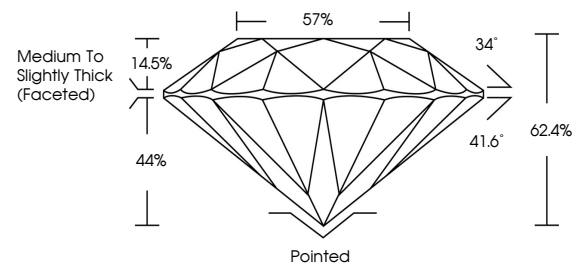
Carat Weight	1.22 CARAT
Color Grade	K
Clarity Grade	VS 2
Cut Grade	EXCELLENT

ADDITIONAL GRADING INFORMATION

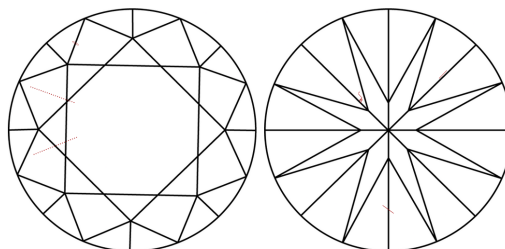
Polish	EXCELLENT
Symmetry	EXCELLENT
Fluorescence	NONE
Inscription(s)	 713558139
Comments: IDEAL CUT ROUND BRILLIANT	

713558139
Report verification at igi.org

PROPORTIONS

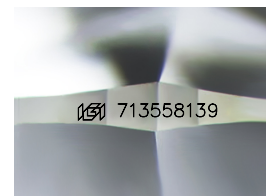


CLARITY CHARACTERISTICS



KEY TO SYMBOLS

Red symbols indicate internal characteristics.
Green symbols indicate external characteristics.



Sample Image Used

COLOR

D - F	G - J	K - M	N - R	S - Z	FANCY
Colorless	Near Colorless	Slightly Tinted	Very Light Color	Light Color	

CLARITY

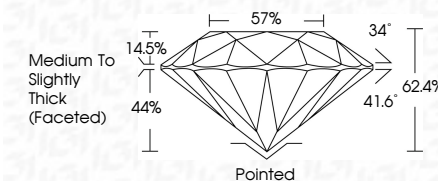
IF	VVS ¹⁻²	VS ¹⁻²	SI ¹⁻²	I ¹⁻³
Internally Flawless	Very Very Slightly Included	Very Slightly Included	Slightly Included	Included



August 1, 2025	
IGI Report Number	713558139
Description	NATURAL DIAMOND
Shape and Cutting Style	ROUND BRILLIANT
Measurements	6.84 - 6.86 X 4.27 MM

GRADING RESULTS

Carat Weight	1.22 CARAT
Color Grade	K
Clarity Grade	VS 2
Cut Grade	EXCELLENT



ADDITIONAL GRADING INFORMATION

Polish	EXCELLENT
Symmetry	EXCELLENT
Fluorescence	NONE
Inscription(s)	 713558139
Comments: IDEAL CUT ROUND BRILLIANT	



© IGI 2020, International Gemological Institute

FD - 10 20



THIS DOCUMENT WAS PRODUCED WITH THE FOLLOWING SECURITY MEASURES: SPECIAL DOCUMENT PAPER, INK SCREENS, WATERMARK, BACKGROUND DESIGNS, HOLOGRAM AND OTHER SECURITY FEATURES NOT LISTED AND DO EXCEED DOCUMENT SECURITY INDUSTRY GUIDELINE

www.igi.org

August 1, 2025	Carat Weight	1.22 CARAT
GI Report No. 713558139	Color Grade	K
ROUND BRILLIANT	Clarity Grade	VS 2
4.64 - 4.66 X 4.27 MM	Cut Grade	EXCELLENT
	Depth	62.4%
	Table	57%
	Girdle	Medium to Slightly Thick (Forecast)
	Culet	Pointed
	Polish	EXCELLENT
	Symmetry	EXCELLENT
	Fluorescence	NONE
	Inscriptions(s)	(gtr 713558139)
Comments:	LDBL CUT ROUND BRILLIANT	