



**ELECTRONIC COPY**

## DIAMOND REPORT

July 22, 2025	
IGI Report Number	716502646
Description	NATURAL DIAMOND
Shape and Cutting Style	ROUND BRILLIANT
Measurements	6.91 - 6.97 X 4.33 MM

## GRADING RESULTS

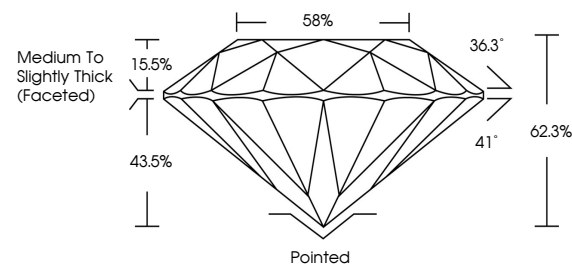
Carat Weight	1.29 CARAT
Color Grade	H
Clarity Grade	VS 1
Cut Grade	EXCELLENT

### ADDITIONAL GRADING INFORMATION

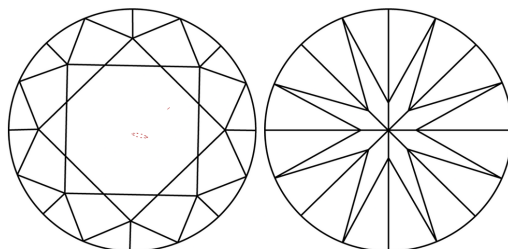
Polish	EXCELLENT
Symmetry	EXCELLENT
Fluorescence	NONE
Inscription(s)	131 716502646

716502646  
Report verification at [igi.org](http://igi.org)

## PROPORTIONS

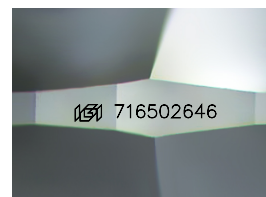


## CLARITY CHARACTERISTICS



### KEY TO SYMBOLS

Red symbols indicate internal characteristics.  
Green symbols indicate external characteristics.



Sample Image Used

**COLOR**

D - F	G - J	K - M	N - R	S - Z	FANCY
Colorless	Near Colorless	Slightly Tinted	Very Light Color	Light Color	

## CLARITY

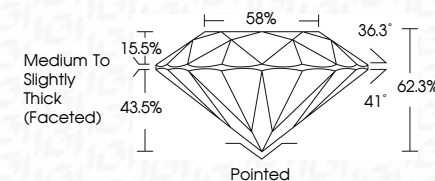
IF	VVS <sup>1-2</sup>	VS <sup>1-2</sup>	SI <sup>1-2</sup>	I <sup>1-3</sup>
Internally Flawless	Very Very Slightly Included	Very Slightly Included	Slightly Included	Included



July 22, 2025	
IGI Report Number	716502646
Description	NATURAL DIAMOND
Shape and Cutting Style	ROUND BRILLIANT
Measurements	6.91 - 6.97 X 4.33 MM

## GRADING RESULTS

Carat Weight	1.29 CARAT
Color Grade	H
Clarity Grade	VS 1
Cut Grade	EXCELLENT



### ADDITIONAL GRADING INFORMATION

Polish	EXCELLENT
Symmetry	EXCELLENT
Fluorescence	NONE
Inscription(s)	(15) 716502646



© IGI 2020, International Gemological Institute

FD - 10 20



THIS DOCUMENT WAS PRODUCED WITH THE FOLLOWING SECURITY MEASURES: SPECIAL DOCUMENT PAPER, INK SCREENS, WATERMARK, BACKGROUND DESIGNS, HOLOGRAM AND OTHER SECURITY FEATURES NOT LISTED AND DO EXCEED DOCUMENT SECURITY INDUSTRY GUIDELINES

**www.igi.org**

July 22, 2025  
GI Report No 716502646  
ROUND BRILLIANT

<b>G Report No</b>	<b>16020446</b>
<b>Report Title</b>	<b>ROUND BRILLIANT</b>
<b>Weight</b>	<b>1.91 - 4.97 X 4.33 MM</b>
<b>Carat Weight</b>	<b>1.29 CARAT</b>
<b>Color Grade</b>	<b>H</b>
<b>Clarity Grade</b>	<b>VS 1</b>
<b>Cut Grade</b>	<b>EXCELLENT</b>
<b>Depth</b>	<b>62.8%</b>
<b>Table</b>	<b>85%</b>
<b>Girdle</b>	<b>Medium to Slightly Thick Faceted</b>
<b>Culet</b>	<b>Polished</b>
<b>Pavilions</b>	<b>EXCELLENT</b>
<b>Symmetry</b>	<b>EXCELLENT</b>
<b>Fluorescence</b>	<b>NONE</b>
<b>Comments</b>	<b>near 7150704A</b>