



**ELECTRONIC COPY**

## DIAMOND REPORT

August 8, 2025	
IGI Report Number	716502679
Description	NATURAL DIAMOND
Shape and Cutting Style	ROUND BRILLIANT
Measurements	6.44 - 6.47 X 3.87 MM

## GRADING RESULTS

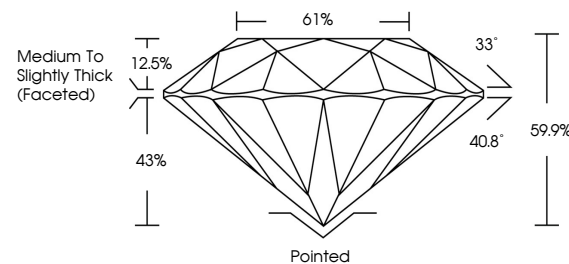
Carat Weight	1.00 CARAT
Color Grade	G
Clarity Grade	VVS 2
Cut Grade	EXCELLENT

### ADDITIONAL GRADING INFORMATION

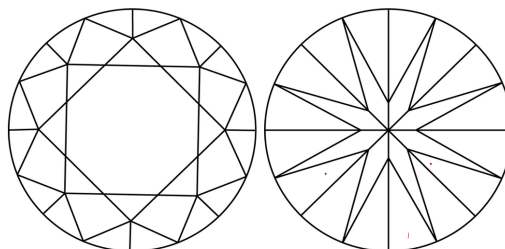
Polish	EXCELLENT
Symmetry	EXCELLENT
Fluorescence	NONE
Inscription(s)	131 716502679

716502679  
Report verification at [igi.org](http://igi.org)

## PROPORTIONS

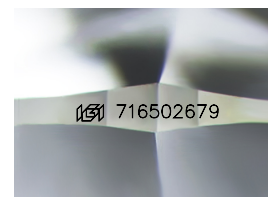


## CLARITY CHARACTERISTICS



## KEY TO SYMBOLS

Red symbols indicate internal characteristics.  
Green symbols indicate external characteristics.



Sample Image Used

**COLOR**

D - F	G - J	K - M	N - R	S - Z	FANCY
Colorless	Near Colorless	Slightly Tinted	Very Light Color	Light Color	

## CLARITY

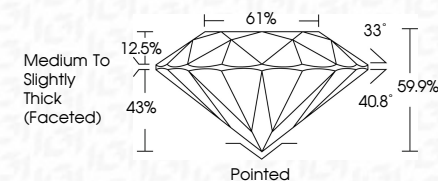
IF	VVS <sup>1-2</sup>	VS <sup>1-2</sup>	SI <sup>1-2</sup>	I <sup>1-3</sup>
Internally Flawless	Very Very Slightly Included	Very Slightly Included	Slightly Included	Included



August 8, 2025	
IGI Report Number	716502679
Description	NATURAL DIAMOND
Shape and Cutting Style	ROUND BRILLIANT
Measurements	6.44 - 6.47 X 3.87 MM

## GRADING RESULTS

Carat Weight	1.00 CARAT
Color Grade	G
Clarity Grade	VVS 2
Cut Grade	EXCELLENT



### ADDITIONAL GRADING INFORMATION

Polish	EXCELLENT
Symmetry	EXCELLENT
Fluorescence	NONE
Inscription(s)	(15) 716502679



IG



© IGI 2020, International Gemological Institute

FD - 10 20



THIS DOCUMENT WAS PRODUCED WITH THE FOLLOWING SECURITY MEASURES: SPECIAL DOCUMENT PAPER, INK SCREENS, WATERMARK, BACKGROUND DESIGNS, HOLOGRAM AND OTHER SECURITY FEATURES NOT LISTED AND DO EXCEED DOCUMENT SECURITY INDUSTRY GUIDELINES

**www.igi.org**

August 8, 2025  
IGI Report No 716502679  
POUND BRILLIANT

IGL Report No 71602679	6.44 - 6.47 X 3.97 MM	1.00 CARAT
ROUND BRILLIANT	Color Grade	G
	Clarity Grade	VVS 2
	Cut Grade	EXCELLENT
	Depth	59.9%
	Table	61%
	Girdle	Medium to Slightly Thick Faceted
	Culet	Polished
	Polish	EXCELLENT
	Symmetry	EXCELLENT
	Fluorescence	NONE
	Inspection(s)	see 71602679