



**ELECTRONIC COPY**

## DIAMOND REPORT

July 14, 2025	
IGI Report Number	719513465
Description	NATURAL DIAMOND
Shape and Cutting Style	ROUND BRILLIANT
Measurements	4.50 - 4.51 X 2.81 MM

## GRADING RESULTS

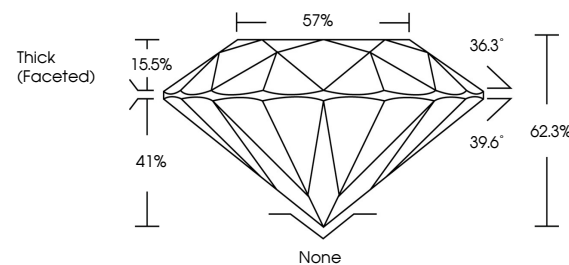
Carat Weight	0.37 CARAT
Color Grade	FANCY VIVID PURPLISH PINK, TREATED COLOR
Clarity Grade	VS 1
Cut Grade	GOOD

### ADDITIONAL GRADING INFORMATION

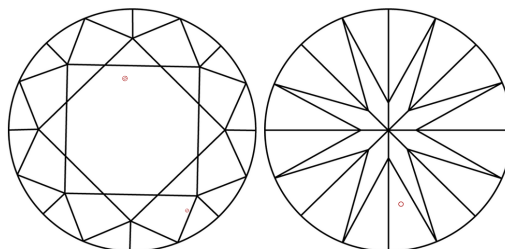
Polish	EXCELLENT
Symmetry	VERY GOOD
Fluorescence	VERY SLIGHT
Inscription(s)	<del>151</del> 719513465 TREATED

719513465  
Report verification at [igi.org](https://igi.org)

## PROPORTIONS

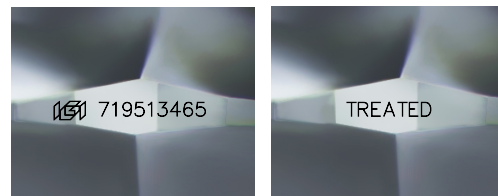


## CLARITY CHARACTERISTICS



## KEY TO SYMBOLS

Red symbols indicate internal characteristics.  
Green symbols indicate external characteristics.



### Sample Images Used

**COLOR**

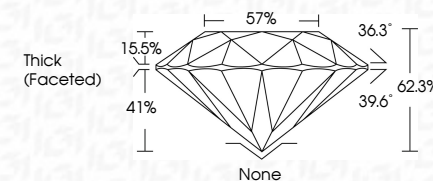
D - F	G - J	K - M	N - R	S - Z	FANCY
Colorless	Near Colorless	Slightly Tinted	Very Light Color	Light Color	

## CLARITY

IF	VVS <sup>1-2</sup>	VS <sup>1-2</sup>	SI <sup>1-2</sup>	I <sup>1-3</sup>
Internally Flawless	Very Very Slightly Included	Very Slightly Included	Slightly Included	Included



July 14, 2025	
IGI Report Number	719513465
Description	NATURAL DIAMOND
Shape and Cutting Style	ROUND BRILLIANT
Measurements	4.50 - 4.51 X 2.81 MM
GRADING RESULTS	
Carat Weight	0.37 CARAT
Color Grade	FANCY VIVID PURPLISH PINK, TREATED COLOR
Clarity Grade	VS 1
Cut Grade	GOOD



### ADDITIONAL GRADING INFORMATION

Polish	EXCELLENT
Symmetry	VERY GOOD
Fluorescence	VERY SLIGHT
Inscription(s)	719513465 TREATED



© IGI 2020, International Gemological Institute

FD - 10 20

**www.igi.org**

THIS DOCUMENT WAS PRODUCED WITH THE FOLLOWING SECURITY MEASURES: SPECIAL DOCUMENT PAPER, INK SCREENS, WATERMARK, BACKGROUND DESIGNS, HOLOGRAM AND OTHER SECURITY FEATURES NOT LISTED AND DO EXCEED DOCUMENT SECURITY INDUSTRY GUIDELINES

July 14, 2025	GL Report No 719513465	
ROUND BRILLIANT		
	4.50 - 4.51 X 2.81 MM	
Carat Weight		FANCY V V
Color Grade		PINK TR
Clarity Grade		
Cut Grade		
Depth		
Table		
Girdle		
Culet		
Polish		
Symmetry		
Fluorescence		
Annotations		