



ELECTRONIC COPY

DIAMOND REPORT

July 9, 2025	
IGI Report Number	719565967
Description	NATURAL DIAMOND
Shape and Cutting Style	PRINCESS CUT
Measurements	6.65 X 6.34 X 4.46 MM

GRADING RESULTS

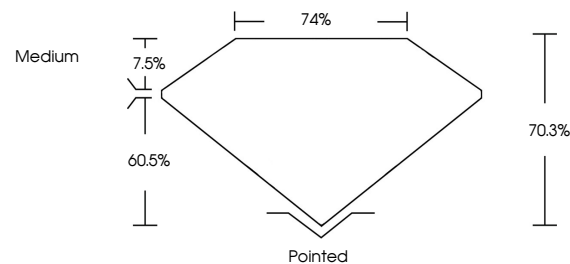
Carat Weight	1.51 CARAT
Color Grade	K
Clarity Grade	VVS 2
Cut Grade	VERY GOOD

ADDITIONAL GRADING INFORMATION

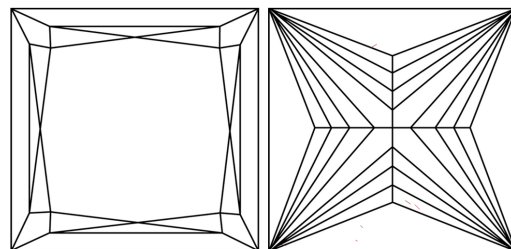
Polish	EXCELLENT
Symmetry	EXCELLENT
Fluorescence	VERY SLIGHT
Inscription(s)	131 719565967

719565967
Report verification at igi.org

PROPORTIONS

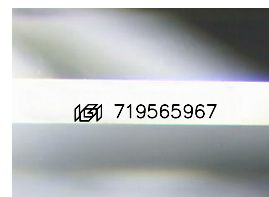


CLARITY CHARACTERISTICS



KEY TO SYMBOLS

Red symbols indicate internal characteristics.
Green symbols indicate external characteristics.



Sample Image Used

COLOR

D - F	G - J	K - M	N - R	S - Z	FANCY
Colorless	Near Colorless	Slightly Tinted	Very Light Color	Light Color	

CLARITY

IF	VVS ¹⁻²	VS ¹⁻²	SI ¹⁻²	I ¹⁻³
Internally Flawless	Very Very Slightly Included	Very Slightly Included	Slightly Included	Included

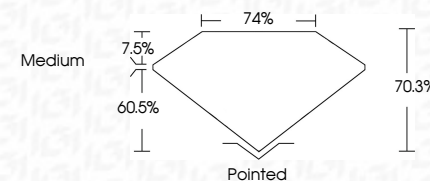
DIAMOND REPORT



July 9, 2025	
IGI Report Number	719565967
Description	NATURAL DIAMOND
Shape and Cutting Style	PRINCESS CUT
Measurements	6.65 X 6.34 X 4.46 MM

GRADING RESULTS

Carat Weight	1.51 CARAT
Color Grade	K
Clarity Grade	VVS 2
Cut Grade	VERY GOOD



ADDITIONAL GRADING INFORMATION

Polish	EXCELLENT
Symmetry	EXCELLENT
Fluorescence	VERY SLIGHT
Inscription(s)	(13) 719565967



IG



© IGI 2020, International Gemological Institute

FD - 10 20



THIS DOCUMENT WAS PRODUCED WITH THE FOLLOWING SECURITY MEASURES: SPECIAL DOCUMENT PAPER, INK SCREENS, WATERMARK, BACKGROUND DESIGNS, HOLOGRAM AND OTHER SECURITY FEATURES NOT LISTED AND DO EXCEED DOCUMENT SECURITY INDUSTRY GUIDELINES

www.igi.org

July 9, 2025
GI Report No 719565967
PRINCESS CUT

1.51 CARAT	VVS 2	Pointed
	VERY GOOD	EXCELLENT
	70.5%	EXCELLENT
	74%	VERY SIGHT
	Medium	Fluorescence
		Symmetry
		Polish
		Culet
		Clarity Grade
		Color Grade
		Carat Weight