



**ELECTRONIC COPY**

## DIAMOND REPORT

July 9, 2025	
IGI Report Number	719565969
Description	NATURAL DIAMOND
Shape and Cutting Style	SQUARE EMERALD CUT
Measurements	6.22 X 6.21 X 4.23 MM

## GRADING RESULTS

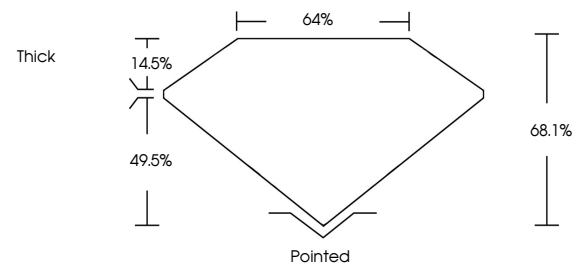
Carat Weight	1.50 CARAT
Color Grade	I
Clarity Grade	VVS 2
Cut Grade	VERY GOOD

### ADDITIONAL GRADING INFORMATION

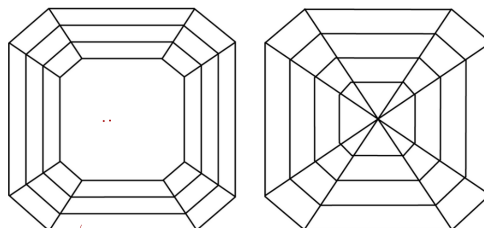
Polish	EXCELLENT
Symmetry	EXCELLENT
Fluorescence	NONE
Inscription(s)	131 719565969

719565969  
Report verification at [igi.org](http://igi.org)

## PROPORTIONS

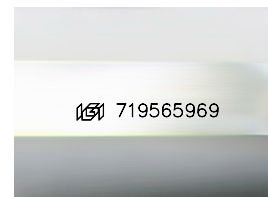


## CLARITY CHARACTERISTICS



## KEY TO SYMBOLS

Red symbols indicate internal characteristics.  
Green symbols indicate external characteristics.



Sample Image Used

**COLOR**

D - F	G - J	K - M	N - R	S - Z	FANCY
Colorless	Near Colorless	Slightly Tinted	Very Light Color	Light Color	

## CLARITY

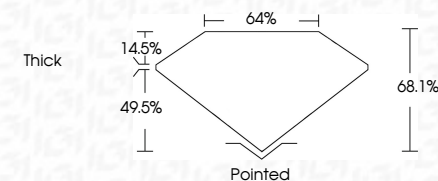
IF	VVS <sup>1-2</sup>	VS <sup>1-2</sup>	SI <sup>1-2</sup>	I <sup>1-3</sup>
Internally Flawless	Very Very Slightly Included	Very Slightly Included	Slightly Included	Included



July 9, 2025	
IGI Report Number	719565969
Description	NATURAL DIAMOND
Shape and Cutting Style	SQUARE EMERALD CUT
Measurements	6.22 X 6.21 X 4.23 MM

## GRADING RESULTS

Carat Weight	1.50 CARAT
Color Grade	I
Clarity Grade	VVS 2
Cut Grade	VERY GOOD



### ADDITIONAL GRADING INFORMATION

Polish	EXCELLENT
Symmetry	EXCELLENT
Fluorescence	NONE
Inscription(s)	(15) 719565969



© IGI 2020, International Gemological Institute

FD - 10 20



THIS DOCUMENT WAS PRODUCED WITH THE FOLLOWING SECURITY MEASURES: SPECIAL DOCUMENT PAPER, INK SCREENS, WATERMARK, BACKGROUND DESIGNS, HOLOGRAM AND OTHER SECURITY FEATURES NOT LISTED AND DO EXCEED DOCUMENT SECURITY INDUSTRY GUIDELINES

**www.igi.org**

July 9, 2025  
GI Report No 719565969  
SQUARE EMERALD CUT

1.50 CARAT	VS 2	VERY GOOD	68.1%	64%	Thick	Pointed	EXCELLENT	EXCELLENT	NONE	from 710000000
1.50 CARAT	VS 2	VERY GOOD	68.1%	64%	Thick	Pointed	EXCELLENT	EXCELLENT	NONE	from 710000000