



**ELECTRONIC COPY**

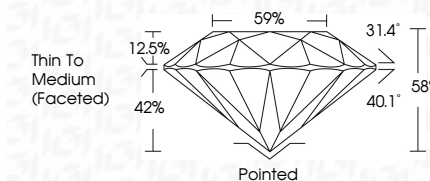
720527254  
Report verification at [igi.org](http://igi.org)



July 11, 2025  
IGI Report Number **720527254**  
Description **NATURAL DIAMOND**  
Shape and Cutting Style **ROUND BRILLIANT**  
Measurements **9.32 - 9.37 X 5.42 MM**

**GRADING RESULTS**

Carat Weight **2.90 CARATS**  
Color Grade **I**  
Clarity Grade **VVS 1**  
Cut Grade **EXCELLENT**



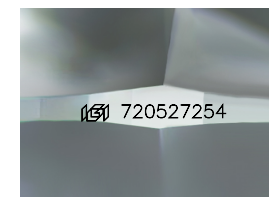
**ADDITIONAL GRADING INFORMATION**

Polish **EXCELLENT**  
Symmetry **EXCELLENT**  
Fluorescence **NONE**  
Inscription(s) **(IGI) 720527254**



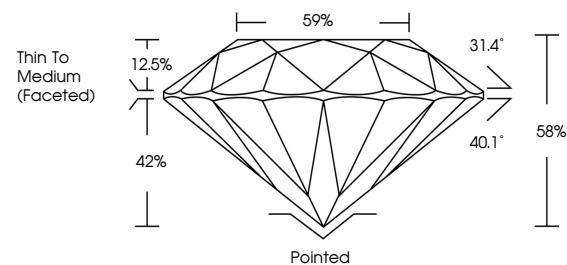
**IGI**

July 11, 2025  
IGI Report No 720527254  
**ROUND BRILLIANT**  
2.90 CARATS  
Color Grade **I**  
Clarity Grade **VVS 1**  
Depth **EXCELLENT**  
Table **85%**  
Girdle **EXCELLENT**  
Culet **None**  
Polish **EXCELLENT**  
Symmetry **EXCELLENT**  
Fluorescence **NONE**  
Inscriptions(s) **(IGI) 720527254**

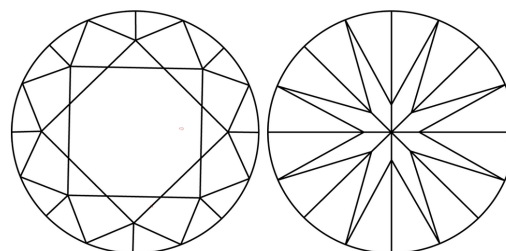


Sample Image Used

**PROPORTIONS**



**CLARITY CHARACTERISTICS**



**KEY TO SYMBOLS**

Red symbols indicate internal characteristics.  
Green symbols indicate external characteristics.

**COLOR**

D - F	G - J	K - M	N - R	S - Z	FANCY
Colorless	Near Colorless	Slightly Tinted	Very Light Color	Light Color	

**CLARITY**

IF	VVS <sup>1-2</sup>	VS <sup>1-2</sup>	SI <sup>1-2</sup>	I <sup>1-3</sup>
Internally Flawless	Very Very Slightly Included	Very Slightly Included	Slightly Included	Included

