



INTERNATIONAL GEMOLOGICAL INSTITUTE

DIAMOND REPORT

July 30, 2025
IGI Report Number **720530072**
Description **NATURAL DIAMOND**
Shape and Cutting Style **CUT CORNERED RECTANGULAR MODIFIED
BRILLIANT**
Measurements **5.63 X 4.19 X 2.94 MM**

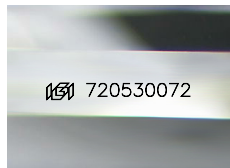
GRADING RESULTS

Carat Weight **0.60 CARAT**
Color Grade **I**
Clarity Grade **VVS 2**
Cut Grade **VERY GOOD**

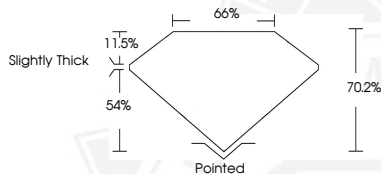
ADDITIONAL GRADING INFORMATION

Polish **EXCELLENT**
Symmetry **EXCELLENT**
Fluorescence **VERY STRONG**
Identification Features **CLOUD**
Inscription(s) **IGI 720530072**
Comments: Light Yellowish Green

ELECTRONIC COPY



Sample Image Used



July 30, 2025

IGI Report Number **720530072**
CUT CORNERED RECTANGULAR
MODIFIED BRILLIANT
NATURAL DIAMOND
5.63 X 4.19 X 2.94 MM
Carat Weight **0.60 CARAT**
Color Grade **I**
Clarity Grade **VVS 2**
Cut Grade **VERY GOOD**
Polish **EXCELLENT**
Symmetry **EXCELLENT**
Fluorescence **VERY STRONG**
Inscription(s) **IGI 720530072**
Comments: Light Yellowish Green



July 30, 2025

IGI Report Number **720530072**
CUT CORNERED RECTANGULAR
MODIFIED BRILLIANT
NATURAL DIAMOND
5.63 X 4.19 X 2.94 MM
Carat Weight **0.60 CARAT**
Color Grade **I**
Clarity Grade **VVS 2**
Cut Grade **VERY GOOD**
Polish **EXCELLENT**
Symmetry **EXCELLENT**
Fluorescence **VERY STRONG**
Inscription(s) **IGI 720530072**
Comments: Light Yellowish Green



THIS DOCUMENT WAS PRODUCED WITH THE FOLLOWING SECURITY MEASURES: SPECIAL DOCUMENT PAPER, INK SCREENS, WATERMARK, BACKGROUND DESIGNS, HOLOGRAM AND OTHER SECURITY FEATURES NOT LISTED AND DO EXCEED DOCUMENT SECURITY INDUSTRY GUIDELINES.

For terms & conditions and to verify this report, please visit www.igi.org