



ELECTRONIC COPY

DIAMOND REPORT

July 22, 2025	
IGI Report Number	722514968
Description	NATURAL DIAMOND
Shape and Cutting Style	ROUND BRILLIANT
Measurements	7.41 - 7.47 X 4.41 MM

GRADING RESULTS

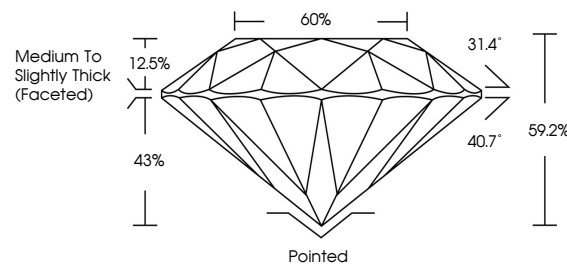
Carat Weight	1.50 CARAT
Color Grade	I
Clarity Grade	VS 2
Cut Grade	EXCELLENT

ADDITIONAL GRADING INFORMATION

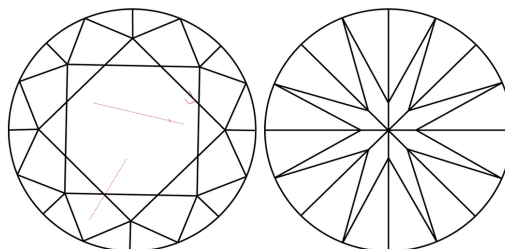
Polish	EXCELLENT
Symmetry	EXCELLENT
Fluorescence	NONE
Inscription(s)	131 722514968

722514968
Report verification at igi.org

PROPORTIONS

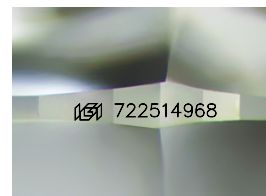


CLARITY CHARACTERISTICS



KEY TO SYMBOLS

Red symbols indicate internal characteristics.
Green symbols indicate external characteristics.



Sample Image Used

COLOR

D - F	G - J	K - M	N - R	S - Z	FANCY
Colorless	Near Colorless	Slightly Tinted	Very Light Color	Light Color	

CLARITY

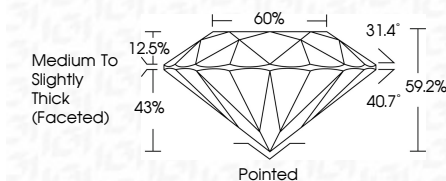
IF	VVS ¹⁻²	VS ¹⁻²	SI ¹⁻²	I ¹⁻³
Internally Flawless	Very Very Slightly Included	Very Slightly Included	Slightly Included	Included



July 22, 2025	
IGI Report Number	722514968
Description	NATURAL DIAMOND
Shape and Cutting Style	ROUND BRILLIANT
Measurements	7.41 - 7.47 X 4.41 MM

GRADING RESULTS

Carat Weight	1.50 CARAT
Color Grade	I
Clarity Grade	VS 2
Cut Grade	EXCELLENT



ADDITIONAL GRADING INFORMATION

Polish	EXCELLENT
Symmetry	EXCELLENT
Fluorescence	NONE
Inscription(s)	(15) 722514968



© IGI 2020, International Gemological Institute

FD - 10 20

www.igi.org



THIS DOCUMENT WAS PRODUCED WITH THE FOLLOWING SECURITY MEASURES: SPECIAL DOCUMENT PAPER, INK SCREENS, WATERMARK, BACKGROUND DESIGNS, HOLOGRAM AND OTHER SECURITY FEATURES NOT LISTED AND DO EXCEED DOCUMENT SECURITY INDUSTRY GUIDELINE

July 22, 2025
GI Report No 722514968
ROUND BRILLIANT

Report No 722514968	1.50 CARAT	VS 2	EXCELLENT	50.2%	50%	Medium to Slightly Thick Faceted	Pointed	EXCELLENT	EXCELLENT	NONE	See 722514968A
ROUND BRILLIANT	1.41 - 1.47 x 4.41 MM						Culet				
	Carat Weight	Clarity Grade	Color Grade	Cut Grade	Depth	Girdle	Polish	Symmetry	Fluorescence	Inclusions(s)	