



# INTERNATIONAL GEMOLOGICAL INSTITUTE

## DIAMOND REPORT

July 24, 2025  
IGI Report Number **723505709**  
Description **NATURAL DIAMOND**  
Shape and Cutting Style **ROUND BRILLIANT**  
Measurements **5.25 - 5.27 X 3.30 MM**

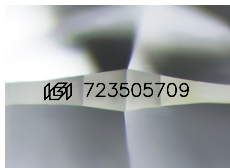
### GRADING RESULTS

Carat Weight **0.56 CARAT**  
Color Grade **G**  
Clarity Grade **VS 2**  
Cut Grade **EXCELLENT**

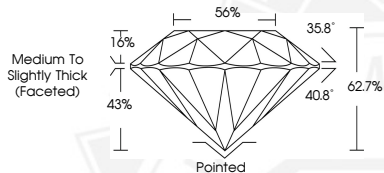
### ADDITIONAL GRADING INFORMATION

Polish **EXCELLENT**  
Symmetry **EXCELLENT**  
Fluorescence **VERY SLIGHT**  
Identification Features **CLOUD, FEATHER, CRYSTAL**  
Inscription(s) **(IGI) 723505709**

ELECTRONIC COPY



Sample Image Used



THIS DOCUMENT WAS PRODUCED WITH THE FOLLOWING SECURITY MEASURES: SPECIAL DOCUMENT PAPER, INK SCREENS, WATERMARK, BACKGROUND DESIGNS, HOLOGRAM AND OTHER SECURITY FEATURES NOT LISTED AND DO EXCEED DOCUMENT SECURITY INDUSTRY GUIDELINES.

For terms & conditions and to verify this report, please visit [www.igi.org](http://www.igi.org)



July 24, 2025

IGI Report Number **723505709**

**ROUND BRILLIANT**

**NATURAL DIAMOND**

**5.25 - 5.27 X 3.30 MM**

Carat Weight **0.56 CARAT**  
Color Grade **G**  
Clarity Grade **VS 2**  
Cut Grade **EXCELLENT**  
Polish **EXCELLENT**  
Symmetry **EXCELLENT**  
Fluorescence **VERY SLIGHT**  
Inscription(s) **(IGI) 723505709**



July 24, 2025

IGI Report Number **723505709**

**ROUND BRILLIANT**

**NATURAL DIAMOND**

**5.25 - 5.27 X 3.30 MM**

Carat Weight **0.56 CARAT**  
Color Grade **G**  
Clarity Grade **VS 2**  
Cut Grade **EXCELLENT**  
Polish **EXCELLENT**  
Symmetry **EXCELLENT**  
Fluorescence **VERY SLIGHT**  
Inscription(s) **(IGI) 723505709**