



ELECTRONIC COPY

DIAMOND REPORT

July 29, 2025	
IGI Report Number	723524795
Description	NATURAL DIAMOND
Shape and Cutting Style	ROUND BRILLIANT
Measurements	6.36 - 6.39 X 4.01 MM

GRADING RESULTS

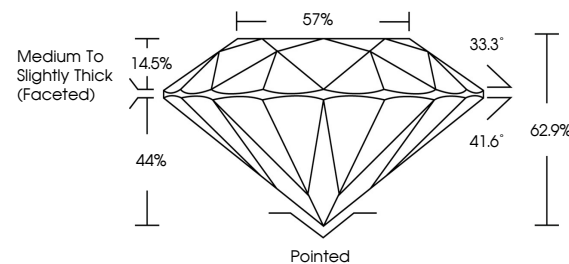
Carat Weight	1.00 CARAT
Color Grade	K
Clarity Grade	SI 1
Cut Grade	EXCELLENT

ADDITIONAL GRADING INFORMATION

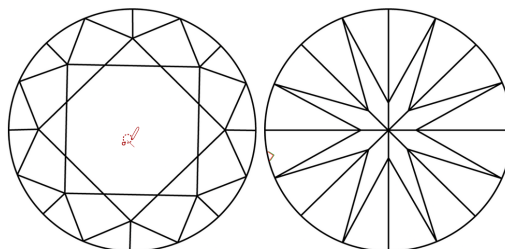
Polish	EXCELLENT
Symmetry	EXCELLENT
Fluorescence	VERY SLIGHT
Inscription(s)	131 723524795

723524795
Report verification at igi.org

PROPORTIONS

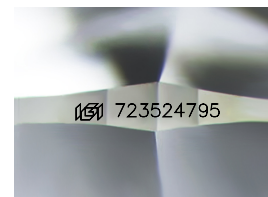


CLARITY CHARACTERISTICS



KEY TO SYMBOLS

Red symbols indicate internal characteristics.
Green symbols indicate external characteristics.



Sample Image Used

COLOR

D - F	G - J	K - M	N - R	S - Z	FANCY
Colorless	Near Colorless	Slightly Tinted	Very Light Color	Light Color	

CLARITY

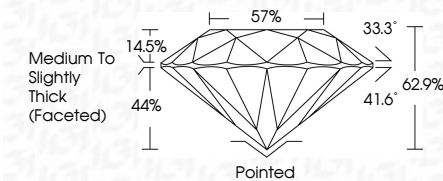
IF	VVS ¹⁻²	VS ¹⁻²	SI ¹⁻²	I ¹⁻³
Internally Flawless	Very Very Slightly Included	Very Slightly Included	Slightly Included	Included



July 29, 2025	
IGI Report Number	723524795
Description	NATURAL DIAMOND
Shape and Cutting Style	ROUND BRILLIANT
Measurements	6.36 - 6.39 X 4.01 MM

GRADING RESULTS

Carat Weight	1.00 CARAT
Color Grade	K
Clarity Grade	SI 1
Cut Grade	EXCELLENT



ADDITIONAL GRADING INFORMATION

Polish	EXCELLENT
Symmetry	EXCELLENT
Fluorescence	VERY SLIGHT
Inscription(s)	(18) 723524795



© IGI 2020, International Gemological Institute

FD - 10 20

www.igi.org



THIS DOCUMENT WAS PRODUCED WITH THE FOLLOWING SECURITY MEASURES: SPECIAL DOCUMENT PAPER, INK SCREENS, WATERMARK, BACKGROUND DESIGNS, HOLOGRAM AND OTHER SECURITY FEATURES NOT LISTED AND DO EXCEED DOCUMENT SECURITY INDUSTRY GUIDELINE

July 29, 2025
 IGI Report No 723524795
 SOUND BRILLIANT

Report No. 72352795	1.00 CARAT
ROUND BRILLIANT	Color Grade
G	Clarity Grade
3.35 - 6.39 X 4.01 MM	Depth
	Table
	Girdle
	Culet
	Polish
	Symmetry
	Fluorescence
	Measurements (mm)
	near 72352795