



12/29/2020	
IGI Report Number	LG455011089
Shape and Cutting Style	ROUND BRILLIANT
Measurements	8.14 - 8.18 x 5.04 mm
GRADING RESULTS	
Carat Weight	2.06 CARATS
Color Grade	G
Clarity Grade	VVS 2
Cut Grade	IDEAL
ADDITIONAL GRADING INFORMATION	
Polish	EXCELLENT
Symmetry	EXCELLENT
Fluorescence	NONE
Inscription(s)	LABGROWN IGI LG455011089
Comments: This Chemical Vapor Deposition (CVD) laboratory grown diamond is classified as Type IIa.	

ADDITIONAL GRADING INFORMATION

Polish	EXCELLENT
Symmetry	EXCELLENT
Fluorescence	NONE
Inscription(s)	LABGROWN IGI LG455011089

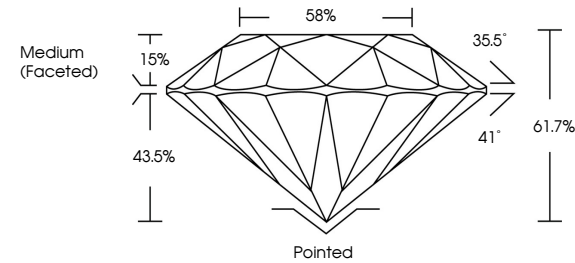
Comments: This Chemical Vapor Deposition (CVD) laboratory grown diamond is classified as Type IIa.



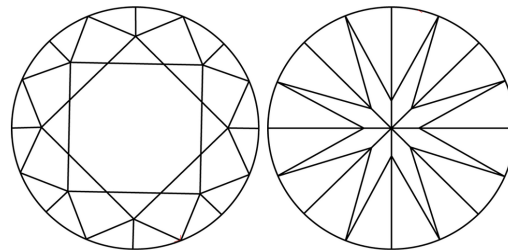
ELECTRONIC COPY

LG455011089

PROPORTIONS



CLARITY CHARACTERISTICS



KEY TO SYMBOLS

Red symbols indicate internal characteristics.
Green symbols indicate external characteristics.

LABORATORY GROWN
DIAMOND REPORT

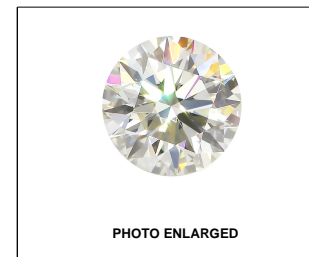
GRADING SCALES

COLOR GRADING SCALE	CL		NC	FT	VLT	LT
	COLORLESS D-F	NEAR COLORLESS G-J		FAINT K-M	VERY LIGHT N-R	LIGHT S-Z
CLARITY (10x) GRADING SCALE	FL	IF	VVS	VS	SI	I
	FLAWLESS INTERNALLY FLAWLESS		VERY VERY SLIGHTLY INCLUDED	VERY SLIGHTLY INCLUDED	SLIGHTLY INCLUDED	INCLUDED

The laboratory growth diamond described in this Report (Report) has been graded, tested, analyzed, examined and/or inscribed by International Gemological Institute (I.G.I.). A laboratory grown diamond is one that has essentially the same chemical, physical and optical properties as a natural diamond. I.G.I. is a laboratory grown diamond manufacturer (a manufactured product). I.G.I. employs and utilizes those techniques and equipment currently available to I.G.I., including, without limitation, 10X magnification, corrected triplet loupe, binocular microscope, master color comparison stones, non-contact-optical color and clarity devices, and/or other instruments and/or processes as deemed appropriate by I.G.I. This Report includes advanced security features. A duly accredited gemologist or jeweler can advise you with respect to the importance of and interrelationship between cut, color, clarity and carat weight.

THIS REPORT IS NEITHER A GUARANTEE, VALUATION, NOR APPRAISAL OF THE GEMSTONE DESCRIBED HEREIN. PLEASE REVIEW THE LIMITATIONS AND RESTRICTIONS SET FORTH ONLINE. FOR A FULL LIST OF I.G.I.'S REPORT LIMITATIONS AND DISCLAIMERS, PLEASE GO TO WWW.IGI.ORG OR CALL 1-888-BUY-IGI.

© INTERNATIONAL GEMOLOGICAL INSTITUTE, INC.



LABGROWN IGI LG455011089

LASERSCRIBESM

© IGI 2020, International Gemological Institute

FD - 10 20

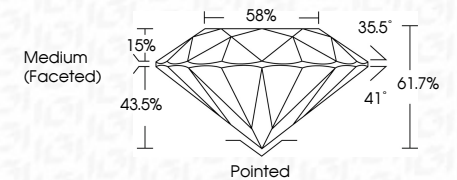
THIS DOCUMENT WAS PRODUCED WITH THE FOLLOWING SECURITY MEASURES: SPECIAL DOCUMENT PAPER, INK SCREENS, WATERMARK, BACKGROUND DESIGNS, HOLOGRAM AND OTHER SECURITY FEATURES NOT LISTED AND DO EXCEED DOCUMENT SECURITY INDUSTRY GUIDELINES

LABORATORY GROWN DIAMOND REPORT

12/29/2020	
IGI Report Number	LG455011089
Shape and Cutting Style	ROUND BRILLIANT
Measurements	8.14 - 8.18 x 5.04 mm

GRADING RESULTS

Carat Weight	2.06 CARATS
Color Grade	G
Clarity Grade	VVS 2
Cut Grade	IDEAL



ADDITIONAL GRADING INFORMATION

Polish	EXCELLENT
Symmetry	EXCELLENT
Fluorescence	NONE
Inscription(s)	LABGROWN IGI LG455011089

Comments: This Chemical Vapor Deposition (CVD) laboratory grown diamond is classified as Type IIa.



IGI

12/29/2020	IGI Report No IG455011089	
ROUND BRILLIANT		
18.14 - 18.15 x 5.04 mm		
Carat Weight	2.06 CARATS	
Color Grade	G	
Clarity Grade	VVS 2	
Cut Grade	IDEAL	
Depth	61.7%	
Table	58%	
Grade	Medium (Faceted)	
Culet	Pointed	
Polish	EXCELLENT	
Symmetry	EXCELLENT	
Fluorescence	NONE	
Inscription(s)	LABGROWN (G) IG455011089	
Comments: This Chemical Vapor Deposition (CVD) laboratory grown diamond is classified as Type Ila.		