



October 9, 2021	
IGI Report Number	LG497143875
Description	LABORATORY GROWN DIAMOND
Shape and Cutting Style	OVAL BRILLIANT
Measurements	9.55 X 6.77 X 4.17 MM

Carat Weight	1.82 CARAT
Color Grade	I
Clarity Grade	SI 1

Polish	EXCELLENT
Symmetry	EXCELLENT
Fluorescence	NONE
Inscription(s)	LABGROWN IGI LG497143875

Comments: This Laboratory Grown Diamond was created by Chemical Vapor Deposition (CVD) growth process and may include post-growth treatment.
Type IIa

LG497143875

Diagram illustrating the dimensions of a diamond-shaped facet:

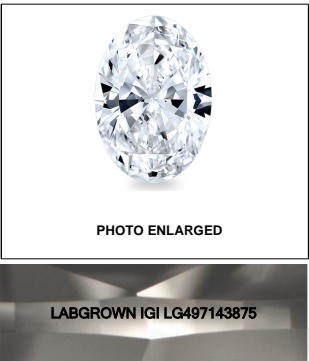
- Top width: 60.5%
- Left width: 15%
- Left height: 41%
- Right height: 61.6%
- Bottom width: 60.5%
- Bottom shape: Pointed

Red symbols indicate internal characteristics.
Green symbols indicate external characteristics.

COLOR GRADING SCALE	CL	NC	FT	VLT	LT	
	COLORLESS D-F	NEAR COLORLESS G-J	FAINT K-M	VERY LIGHT N-R	LIGHT S-Z	
CLARITY (10x) GRADING SCALE	FL	IF	VVS	VS	SI	I
	FLAWLESS INTERNALLY FLAWLESS	VERY VERY SLIGHTLY INCLUDED	VERY SLIGHTLY INCLUDED	SLIGHTLY INCLUDED	INCLUDED	

The laboratory grown diamond described in this Report (Report) has been graded, tested, analyzed, examined and/or inscribed by International Gemological Institute (IGI). A laboratory grown diamond is one that has essentially the same chemical, physical and optical properties as a natural diamond. IGI is a company owned by a Jeweler (a Jeweler, a manufacturer or a manufacturer's representative) and is not a manufacturer of diamonds (a manufacturer or a manufacturer's representative). IGI employs and utilizes those techniques and equipment currently available to IGI, including, without limitation, 10X magnification, corrected and uncorrected, binocular loupe, master color comparison stones, non-contact infrared measuring monochromator and/or spectrophotometer, and/or such other instruments and/or processes as deemed appropriate by IGI. This Report includes advised security features. A duly accredited gemologist or jeweler can advise you with relevance the importance of and interrelationship between cut, color, clarity and carat weight.

THIS REPORT IS NEITHER A GUARANTEE, VALUATION, NOR APPRAISAL OF THE GEMSTONE DESCRIBED HEREIN. PLEASE REVIEW THE LIMITATIONS AND RESTRICTIONS SET FORTH ONLINE FOR THIS REPORT. FOR MORE INFORMATION ON THE LIMITATIONS AND DISCLAIMERS, PLEASE GO TO WWW.IGI.ORG OR CALL 1-888-BUY-IGI.

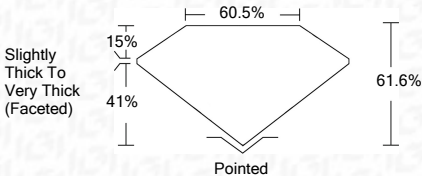
**LASERSCRIBESM**

© IGI 2020, International Gemological Institute

FD - 10 20

October 9, 2021	
IGI Report Number	LG497143875
Description	LABORATORY GROWN DIAMOND
Shape and Cutting Style	OVAL BRILLIANT
Measurements	9.55 X 6.77 X 4.17 MM

Carat Weight	1.82 CARAT
Color Grade	I
Clarity Grade	SI 1



Polish	EXCELLENT
Symmetry	EXCELLENT
Fluorescence	NONE
Inscription(s)	LABGROWN IGI LG497143875

Comments: This Laboratory Grown Diamond was created by Chemical Vapor Deposition (CVD) growth process and may include post-growth treatment.
Type IIa



October 9, 2021	IGI Report No LC46714375		
COVAL BRILLIANT	9.95 X 6.77 X 4.17 MM	1.82 CARAT	
Carat Weight			
Color Grade		I	
Clarity Grade		S11	
Depth		61.6%	
Table		60.5%	
Girdle		Slightly Thick To Very Thick (Faceted)	
Culet		Polished	
Polish		EXCELLENT	
Symmetry		EXCELLENT	
Fluorescence		NONE	
Inscription(s)		LABSGROWN IGI LC46714375	
Comments:	This Laboratory Grown Diamond was created by Chemical Vapor Deposition (CVD) growth process and may include post-growth treatments.		
Type	Type Ila		

This Laboratory Grown Diamond was created by Chemical Vapor Deposition (CVD) growth process and may include post-growth treatment.