



# LABORATORY GROWN DIAMOND REPORT

October 18, 2021

IGI Report Number **LG499105225**

Description	LABORATORY GROWN DIAMOND
Shape and Cutting Style	OVAL BRILLIANT

Measurements **9.67 X 7.15 X 4.52 MM**

## GRADING RESULTS

Carat Weight	2.00 CARATS
Color Grade	I
Clarity Grade	SI 1

### ADDITIONAL GRADING INFORMATION

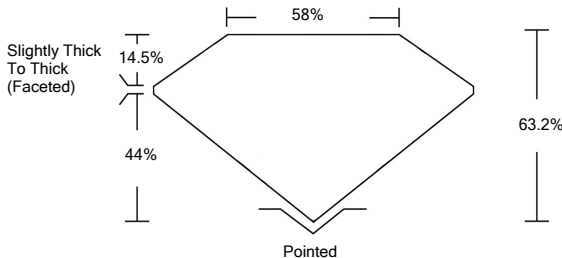
Polish	EXCELLENT
Symmetry	VERY GOOD
Fluorescence	NONE
Inscription(s)	LABGROWN IGI LG499105225

Comments: This Laboratory Grown Diamond was created by Chemical Vapor Deposition (CVD) growth process and may include post-growth treatment.  
Type IIa

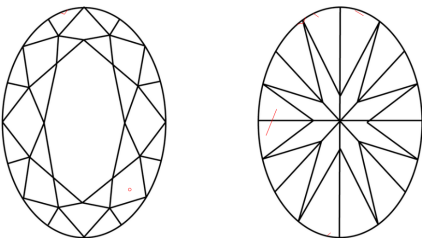
**ELECTRONIC COPY**

LG499105225

## PROPORTIONS



## CLARITY CHARACTERISTICS



## KEY TO SYMBOLS

Red symbols indicate internal characteristics.  
Green symbols indicate external characteristics.

# LABORATORY GROWN DIAMOND REPORT

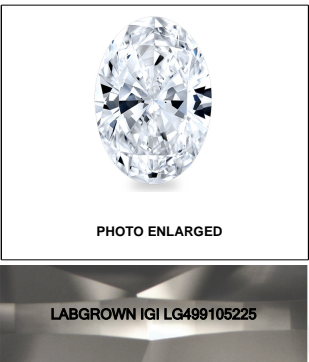
## GRADING SCALES

COLOR GRADING SCALE	CL		NC		FT		VLT		LT	
	COLORLESS D-F		NEAR COLORLESS G-J		FAINT K-M		VERY LIGHT N-R		LIGHT S-Z	
CLARITY (10x) GRADING SCALE	FL IF		VVS		VS		SI		I	
	FLAWLESS INTERNALLY FLAWLESS		VERY VERY SLIGHTLY INCLUDED		VERY SLIGHTLY INCLUDED		SLIGHTLY INCLUDED		INCLUDED	

The laboratory grown diamond described in this Report (Report) has been graded, tested, analyzed, examined and/or inscribed by International Gemological Institute (IGI). A laboratory grown diamond is one that has essentially the same chemical, physical and optical properties as a natural diamond. IGI is a leading diamond grading laboratory (a manufactured product). IGI employs and utilizes those techniques and equipment currently available to IGI, including, without limitation, 10X magnification, corrected triplet loupe, binocular microscope, master color comparison stones, non-contact-optical spectrophotometer, diamond grading software, and other diamond grading instruments and/or processes as deemed appropriate by IGI. This Report includes advanced security features. A duly accredited gemologist or jeweler can advise you with respect to the importance of and interrelationship between cut, color, clarity and carat weight.

**THIS REPORT IS NEITHER A GUARANTEE, VALUATION, NOR APPRAISAL OF THE GEMSTONE DESCRIBED HEREIN. PLEASE REVIEW THE LIMITATIONS AND RESTRICTIONS SET FORTH ONLINE. FOR MORE INFORMATION, VISIT [WWW.IGI.ORG](http://WWW.IGI.ORG) OR CALL 1-888-BUY-IGI.**

© INTERNATIONAL GEMOLOGICAL INSTITUTE, INC.

**LASERSCRIBE<sup>SM</sup>**

© IGI 2020, International Gemological Institute

FD - 10 20

## LABORATORY GROWN DIAMOND REPORT

October 18, 2021

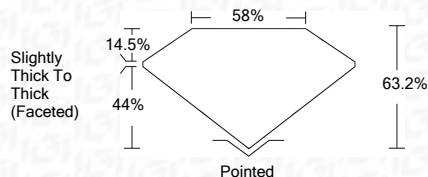
IGI Report Number **LG499105225**

Description **LABORATORY GROWN**

Shape and Cutting Style	OVAL BRILLIANT
Measurements	9.67 X 7.15 X 4.52 MM

## GRADING RESULTS

Carat Weight	2.00 CARATS
Color Grade	I
Clarity Grade	SI 1



### ADDITIONAL GRADING INFORMATION

Polish	EXCELLENT
Symmetry	VERY GOOD
Fluorescence	NONE
Inscription(s)	LABGROWN IGI LG499105225

Comments: This Laboratory Grown Diamond was created by Chemical Vapor Deposition (CVD) growth process and may include post-growth treatment.  
Type IIa



October 18, 2021		IGI Report No. LG498106225	
OVAL BRILLIANT		2.00 CARATS	
6.67 x 7.75 x 4.52 MM		I	
Carat Weight		SI 1	
Color Grade		63.2%	
Clarity Grade		58%	
Depth		Slightly Thick To Thick (Foisted)	
Table		Pointed	
Girdle		EXCELLENT	
Culet		VERY GOOD	
Polish		NONE	
Symmetry		LAB-GROWN IGI Lower 106225	
Fluorescence		Comments:	
Inscriptions (s)		This Laboratory Grown Diamond was created by Chemical Vapor Deposition (CVD) growth process and may include post-growth treatments.	
Type Ia		Type IIa	