



**ELECTRONIC COPY**

## LABORATORY GROWN DIAMOND REPORT

February 19, 2022	
IGI Report Number	LG502119093
Description	LABORATORY GROWN DIAMOND
Shape and Cutting Style	ROUND BRILLIANT
Measurements	6.93 - 6.96 X 4.27 MM

## GRADING RESULTS

Carat Weight	1.26 CARAT
Color Grade	G
Clarity Grade	VS 2
Cut Grade	IDEAL

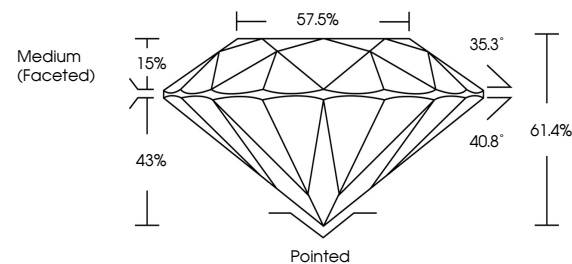
### ADDITIONAL GRADING INFORMATION

Polish	EXCELLENT
Symmetry	EXCELLENT
Fluorescence	NONE
Inscription(s)	LABGROWN IGI LG502119093

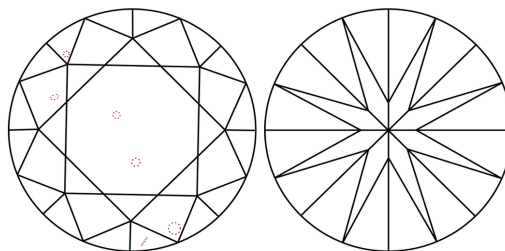
Comments: This Laboratory Grown Diamond was created by Chemical Vapor Deposition (CVD) growth process and may include post-growth treatment  
Type IIa

LG502119093

## PROPORTIONS



## CLARITY CHARACTERISTICS



## KEY TO SYMBOLS

Red symbols indicate internal characteristics.  
Green symbols indicate external characteristics.

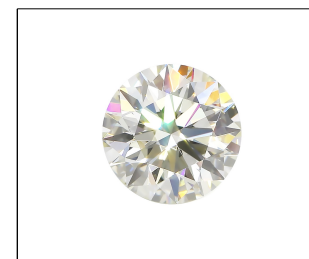
## GRADING SCALES

COLOR GRADING SCALE	CL		NC		FT		VLT		LT	
	COLORLESS D-F		NEAR COLORLESS G-J		FAINT K-M		VERY LIGHT N-R		LIGHT S-Z	
CLARITY (10x) GRADING SCALE	FL IF		VVS		VS		SI		I	
	FLAWLESS INTERNALLY FLAWLESS		VERY VERY SLIGHTLY INCLUDED		VERY SLIGHTLY INCLUDED		SLIGHTLY INCLUDED		INCLUDED	

The laboratory grow/diamond described in this Report (Report) has been graded, tested, analyzed, examined and/or inscribed by International Gemological Institute (IGI). A laboratory grown diamond is one that has essentially the same chemical, physical and optical properties as a mined diamond with the exception of being grown by man in a manufacturing process. IGI employs and utilizes those techniques and equipment currently available to IGI, including, without limitation, 10X magnification, corrected triplet loupe, binocular microscope, master color comparison stones, non-contact-optical goniometer, double refractometer, ultraviolet light, fluorescence spectrometer, and instruments and/or processes as deemed appropriate by IGI. This Report includes advanced security features. A duly accredited gemologist or jeweler can advise you with respect to the importance of and interrelationship between cut, color, clarity and carat weight.

**THIS REPORT IS NEITHER A GUARANTEE, VALUATION, NOR APPRAISAL OF THE GEMSTONE DESCRIBED HEREIN. PLEASE REVIEW THE LIMITATIONS AND RESTRICTIONS SET FORTH ONLINE FOR THIS REPORT. IGI, IGL, IGLS, IGLOR, IGLORL, IGLORLH, IGLORLH2, IGLORLH3, IGLORLH4, IGLORLH5, IGLORLH6, IGLORLH7, IGLORLH8, IGLORLH9, IGLORLH10, IGLORLH11, IGLORLH12, IGLORLH13, IGLORLH14, IGLORLH15, IGLORLH16, IGLORLH17, IGLORLH18, IGLORLH19, IGLORLH20, IGLORLH21, IGLORLH22, IGLORLH23, IGLORLH24, IGLORLH25, IGLORLH26, IGLORLH27, IGLORLH28, IGLORLH29, IGLORLH30, IGLORLH31, IGLORLH32, IGLORLH33, IGLORLH34, IGLORLH35, IGLORLH36, IGLORLH37, IGLORLH38, IGLORLH39, IGLORLH40, IGLORLH41, IGLORLH42, IGLORLH43, IGLORLH44, IGLORLH45, IGLORLH46, IGLORLH47, IGLORLH48, IGLORLH49, IGLORLH50, IGLORLH51, IGLORLH52, IGLORLH53, IGLORLH54, IGLORLH55, IGLORLH56, IGLORLH57, IGLORLH58, IGLORLH59, IGLORLH60, IGLORLH61, IGLORLH62, IGLORLH63, IGLORLH64, IGLORLH65, IGLORLH66, IGLORLH67, IGLORLH68, IGLORLH69, IGLORLH70, IGLORLH71, IGLORLH72, IGLORLH73, IGLORLH74, IGLORLH75, IGLORLH76, IGLORLH77, IGLORLH78, IGLORLH79, IGLORLH80, IGLORLH81, IGLORLH82, IGLORLH83, IGLORLH84, IGLORLH85, IGLORLH86, IGLORLH87, IGLORLH88, IGLORLH89, IGLORLH90, IGLORLH91, IGLORLH92, IGLORLH93, IGLORLH94, IGLORLH95, IGLORLH96, IGLORLH97, IGLORLH98, IGLORLH99, IGLORLH100, IGLORLH101, IGLORLH102, IGLORLH103, IGLORLH104, IGLORLH105, IGLORLH106, IGLORLH107, IGLORLH108, IGLORLH109, IGLORLH110, IGLORLH111, IGLORLH112, IGLORLH113, IGLORLH114, IGLORLH115, IGLORLH116, IGLORLH117, IGLORLH118, IGLORLH119, IGLORLH120, IGLORLH121, IGLORLH122, IGLORLH123, IGLORLH124, IGLORLH125, IGLORLH126, IGLORLH127, IGLORLH128, IGLORLH129, IGLORLH130, IGLORLH131, IGLORLH132, IGLORLH133, IGLORLH134, IGLORLH135, IGLORLH136, IGLORLH137, IGLORLH138, IGLORLH139, IGLORLH140, IGLORLH141, IGLORLH142, IGLORLH143, IGLORLH144, IGLORLH145, IGLORLH146, IGLORLH147, IGLORLH148, IGLORLH149, IGLORLH150, IGLORLH151, IGLORLH152, IGLORLH153, IGLORLH154, IGLORLH155, IGLORLH156, IGLORLH157, IGLORLH158, IGLORLH159, IGLORLH160, IGLORLH161, IGLORLH162, IGLORLH163, IGLORLH164, IGLORLH165, IGLORLH166, IGLORLH167, IGLORLH168, IGLORLH169, IGLORLH170, IGLORLH171, IGLORLH172, IGLORLH173, IGLORLH174, IGLORLH175, IGLORLH176, IGLORLH177, IGLORLH178, IGLORLH179, IGLORLH180, IGLORLH181, IGLORLH182, IGLORLH183, IGLORLH184, IGLORLH185, IGLORLH186, IGLORLH187, IGLORLH188, IGLORLH189, IGLORLH190, IGLORLH191, IGLORLH192, IGLORLH193, IGLORLH194, IGLORLH195, IGLORLH196, IGLORLH197, IGLORLH198, IGLORLH199, IGLORLH200, IGLORLH201, IGLORLH202, IGLORLH203, IGLORLH204, IGLORLH205, IGLORLH206, IGLORLH207, IGLORLH208, IGLORLH209, IGLORLH210, IGLORLH211, IGLORLH212, IGLORLH213, IGLORLH214, IGLORLH215, IGLORLH216, IGLORLH217, IGLORLH218, IGLORLH219, IGLORLH220, IGLORLH221, IGLORLH222, IGLORLH223, IGLORLH224, IGLORLH225, IGLORLH226, IGLORLH227, IGLORLH228, IGLORLH229, IGLORLH230, IGLORLH231, IGLORLH232, IGLORLH233, IGLORLH234, IGLORLH235, IGLORLH236, IGLORLH237, IGLORLH238, IGLORLH239, IGLORLH240, IGLORLH241, IGLORLH242, IGLORLH243, IGLORLH244, IGLORLH245, IGLORLH246, IGLORLH247, IGLORLH248, IGLORLH249, IGLORLH250, IGLORLH251, IGLORLH252, IGLORLH253, IGLORLH254, IGLORLH255, IGLORLH256, IGLORLH257, IGLORLH258, IGLORLH259, IGLORLH260, IGLORLH261, IGLORLH262, IGLORLH263, IGLORLH264, IGLORLH265, IGLORLH266, IGLORLH267, IGLORLH268, IGLORLH269, IGLORLH270, IGLORLH271, IGLORLH272, IGLORLH273, IGLORLH274, IGLORLH275, IGLORLH276, IGLORLH277, IGLORLH278, IGLORLH279, IGLORLH280, IGLORLH281, IGLORLH282, IGLORLH283, IGLORLH284, IGLORLH285, IGLORLH286, IGLORLH287, IGLORLH288, IGLORLH289, IGLORLH290, IGLORLH291, IGLORLH292, IGLORLH293, IGLORLH294, IGLORLH295, IGLORLH296, IGLORLH297, IGLORLH298, IGLORLH299, IGLORLH300, IGLORLH301, IGLORLH302, IGLORLH303, IGLORLH304, IGLORLH305, IGLORLH306, IGLORLH307, IGLORLH308, IGLORLH309, IGLORLH310, IGLORLH311, IGLORLH312, IGLORLH313, IGLORLH314, IGLORLH315, IGLORLH316, IGLORLH317, IGLORLH318, IGLORLH319, IGLORLH320, IGLORLH321, IGLORLH322, IGLORLH323, IGLORLH324, IGLORLH325, IGLORLH326, IGLORLH327, IGLORLH328, IGLORLH329, IGLORLH330, IGLORLH331, IGLORLH332, IGLORLH333, IGLORLH334, IGLORLH335, IGLORLH336, IGLORLH337, IGLORLH338, IGLORLH339, IGLORLH340, IGLORLH341, IGLORLH342, IGLORLH343, IGLORLH344, IGLORLH345, IGLORLH346, IGLORLH347, IGLORLH348, IGLORLH349, IGLORLH350, IGLORLH351, IGLORLH352, IGLORLH353, IGLORLH354, IGLORLH355, IGLORLH356, IGLORLH357, IGLORLH358, IGLORLH359, IGLORLH360, IGLORLH361, IGLORLH362, IGLORLH363, IGLORLH364, IGLORLH365, IGLORLH366, IGLORLH367, IGLORLH368, IGLORLH369, IGLORLH370, IGLORLH371, IGLORLH372, IGLORLH373, IGLORLH374, IGLORLH375, IGLORLH376, IGLORLH377, IGLORLH378, IGLORLH379, IGLORLH380, IGLORLH381, IGLORLH382, IGLORLH383, IGLORLH384, IGLORLH385, IGLORLH386, IGLORLH387, IGLORLH388, IGLORLH389, IGLORLH390, IGLORLH391, IGLORLH392, IGLORLH393, IGLORLH394, IGLORLH395, IGLORLH396, IGLORLH397, IGLORLH398, IGLORLH399, IGLORLH400, IGLORLH401, IGLORLH402, IGLORLH403, IGLORLH404, IGLORLH405, IGLORLH406, IGLORLH407, IGLORLH408, IGLORLH409, IGLORLH410, IGLORLH411, IGLORLH412, IGLORLH413, IGLORLH414, IGLORLH415, IGLORLH416, IGLORLH417, IGLORLH418, IGLORLH419, IGLORLH420, IGLORLH421, IGLORLH422, IGLORLH423, IGLORLH424, IGLORLH425, IGLORLH426, IGLORLH427, IGLORLH428, IGLORLH429, IGLORLH430, IGLORLH431, IGLORLH432, IGLORLH433, IGLORLH434, IGLORLH435, IGLORLH436, IGLORLH437, IGLORLH438, IGLORLH439, I**

© INTERNATIONAL GEMOLOGICAL INSTITUTE, INC.



LABGROWN | G | LG502119093

LASERSCRIBE<sup>SM</sup>

Sample Image Used



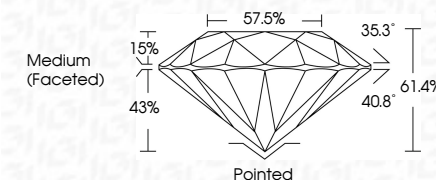
© IGI 2020, International Gemological Institute

FD - 10 20

THIS DOCUMENT WAS PRODUCED WITH THE FOLLOWING SECURITY MEASURES: SPECIAL DOCUMENT PAPER, INK SCREENS, WATERMARK, BACKGROUND DESIGNS, HOLOGRAM AND OTHER SECURITY FEATURES NOT LISTED AND DO EXCEED DOCUMENT SECURITY INDUSTRY GUIDELINES

## LABORATORY GROWN DIAMOND REPORT

February 19, 2022	
IGI Report Number	LG502119093
Description	LABORATORY GROWN DIAMOND
Shape and Cutting Style	ROUND BRILLIANT
Measurements	6.93 - 6.96 X 4.27 MM
<b>GRADING RESULTS</b>	
Carat Weight	1.26 CARAT
Color Grade	G
Clarity Grade	VS 2
Cut Grade	IDEAL



### ADDITIONAL GRADING INFORMATION

Polish	EXCELLENT
Symmetry	EXCELLENT
Fluorescence	NONE
Inscription(s)	LABGROWN IGI LG502119093

Inscription(s) LABGROWN IGI LG502119093

Comments: This Laboratory Grown Diamond was created by Chemical Vapor Deposition (CVD) growth process and may include post-growth treatment  
Type IIa



February 19, 2022	IGI Report No. LG602119093	
ROUND BRILLIANT		
VS 2	1.26 CARAT	Printed
IDEAL		EXCELLENT
61.6%		EXCELLENT
57.5%		NONE
		LARGEDOWN (G)
		LG602119093
Medium (Faceted)		
Clarity Grade	Color Grade	Quief
Cut Grade	Carat Weight	Polish
Depth	Color	Symmetry
Table	Carat Weight	Fluorescence
Grade	Color	Inclusions(s)
Comments: This Laboratory Grown Diamond was created by Chemical Vapor Deposition (CVD) growth process and may include trace growth treatment		
Type I		