



**ELECTRONIC COPY**

## LABORATORY GROWN DIAMOND REPORT

April 6, 2022	
IGI Report Number	LG523266332
Description	LABORATORY GROWN DIAMOND
Shape and Cutting Style	ROUND BRILLIANT
Measurements	9.07 - 9.10 X 5.57 MM

## GRADING RESULTS

Carat Weight	2.82 CARATS
Color Grade	G
Clarity Grade	VVS 2
Cut Grade	IDEAL

### ADDITIONAL GRADING INFORMATION

Polish	EXCELLENT
Symmetry	EXCELLENT
Fluorescence	NONE
Inscription(s)	LABGROWN 151 LG523266332

Comments: HEARTS & ARROWS  
This Laboratory Grown Diamond was created by  
Chemical Vapor Deposition (CVD) growth process and  
may include post-growth treatment.  
Type IIa

LG523266332

**PROPORTIONS**

Medium To Slightly Thick (Faceted)

56.5%

34.4°

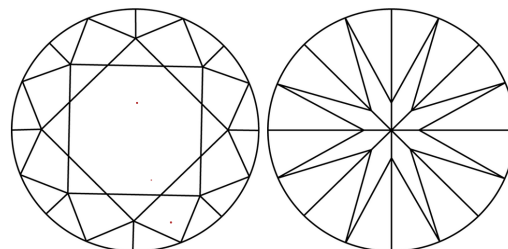
43%

40.6°

61.3%

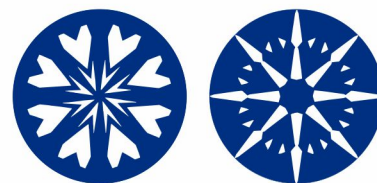
Pointed

## CLARITY CHARACTERISTICS



## KEY TO SYMBOLS

Red symbols indicate internal characteristics.  
Green symbols indicate external characteristics.

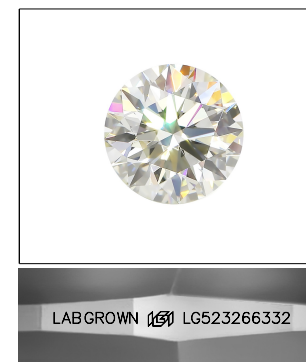


**www.igi.org**

LABORATORY GROWN  
DIAMOND REPORT

## GRADING SCALES

COLOR GRADING SCALE	CL		NC		FT		VLT		LT	
	COLORLESS D-F		NEAR COLORLESS G-J		FAINT K-M		VERY LIGHT N-R		LIGHT S-Z	
CLARITY (10x) GRADING SCALE	FL	IF	VVS		VS		SI		I	
	FLAWLESS INTERNALLY FLAWLESS		VERY VERY SLIGHTLY INCLUDED		VERY SLIGHTLY INCLUDED		SLIGHTLY INCLUDED		INCLUDED	

LASERSCRIBE<sup>SM</sup>

Sample Image Used

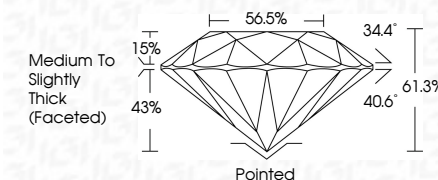


© IGI 2020, International Gemological Institute

FD - 10 20

LABORATORY GROWN DIAMOND REPORT

April 6, 2022	
IGI Report Number	LG523266332
Description	LABORATORY GROWN DIAMOND
Shape and Cutting Style	ROUND BRILLIANT
Measurements	9.07 - 9.10 X 5.57 MM
<b>GRADING RESULTS</b>	
Carat Weight	2.82 CARATS
Color Grade	G
Clarity Grade	VVS 2
Cut Grade	IDEAL



### ADDITIONAL GRADING INFORMATION

Polish	EXCELLENT
Symmetry	EXCELLENT
Fluorescence	NONE
Inscription(s)	LABGROWN (15) LG523266332

Comments: HEARTS & ARROWS  
This Laboratory Grown Diamond was created by  
Chemical Vapor Deposition (CVD) growth process and  
may include post-growth treatment.  
Type IIa



April 6, 2022	Lab Report No. LG2022040332		
GROWN DIAMOND ROUND BRILLIANT		2.82 CARATS	G
Carat Weight	7.07 - 9.10 X 5.57 MM		
Color Grade	Clarity Grade	VVS 2	IDEAL
Cut Grade	Depth	61.3%	56.5%
Table	Girdle	Medium to Slightly Thick (Faceted)	
Culet	Polish	Patched	
Symmetry	Fluorescence	B'CELENT	
Inclusions (if any)		B'CELENT	
		NONE	
		LABGROWN (G) LG2022040332	

Comments:  
HEART & ARROWS  
The Laboratory Grown Diamond was created by Chemical Vapor Deposition (CVD) growth process and may include post-growth treatment.