



INTERNATIONAL GEMOLOGICAL INSTITUTE

ELECTRONIC COPY

LABORATORY GROWN DIAMOND REPORT

LG528229716

IGI LABORATORY GROWN DIAMOND ID REPORT

May 24, 2022

IGI Report Number **LG528229716**

OVAL MODIFIED BRILLIANT

5.97 X 4.22 X 2.58 MM

Carat Weight	0.51 CARAT
Color Grade	FANCY VIVID BLUE
Clarity Grade	I 1
Polish	EXCELLENT
Symmetry	VERY GOOD
Fluorescence	NONE
Inscription(s)	LABGROWN IGI LG528229716

Comments: As Grown - No indication of post-growth treatment.
This Laboratory Grown Diamond was created by High Pressure High Temperature (HPHT) growth process.

LABORATORY GROWN DIAMOND REPORT

IGI LABORATORY GROWN DIAMOND IDENTIFICATION REPORT

May 24, 2022

IGI Report Number

LG528229716

Description

LABORATORY GROWN DIAMOND

Shape and Cutting Style

OVAL MODIFIED BRILLIANT

Measurements

5.97 X 4.22 X 2.58 MM

GRADING RESULTS

Carat Weight

0.51 CARAT

Color Grade

FANCY VIVID BLUE

Clarity Grade

I 1

ADDITIONAL GRADING INFORMATION

Polish

EXCELLENT

Symmetry

VERY GOOD

Fluorescence

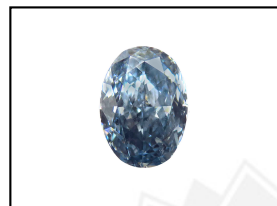
NONE

Inscription(s)

LABGROWN IGI LG528229716

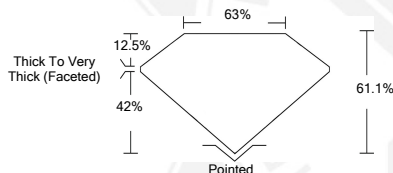
Comments: As Grown - No indication of post-growth treatment.

This Laboratory Grown Diamond was created by High Pressure High Temperature (HPHT) growth process.



LABGROWN IGI LG528229716

LASERScribe SM
Sample Images Used



THIS DOCUMENT WAS PRODUCED WITH THE FOLLOWING SECURITY MEASURES: SPECIAL DOCUMENT PAPER, INK SCREENS, WATERMARK, BACKGROUND DESIGN, HOLOGRAM AND OTHER SECURITY FEATURES NOT LISTED AND DO EXCEED DOCUMENT SECURITY INDUSTRY GUIDELINES.

For terms & conditions and to verify this report, please visit www.igi.org