



# INTERNATIONAL GEMOLOGICAL INSTITUTE

ELECTRONIC COPY

## LABORATORY GROWN DIAMOND REPORT

LG537246739

### LABORATORY GROWN DIAMOND REPORT

#### IGI LABORATORY GROWN DIAMOND IDENTIFICATION REPORT

August 23, 2022  
IGI Report Number LG537246739  
Description LABORATORY GROWN DIAMOND  
Shape and Cutting Style PEAR BRILLIANT  
Measurements 6.40 X 3.98 X 2.48 MM

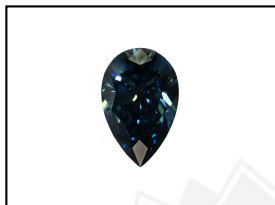
#### GRADING RESULTS

Carat Weight 0.43 CARAT  
Color Grade FANCY VIVID BLUE  
Clarity Grade SI 2

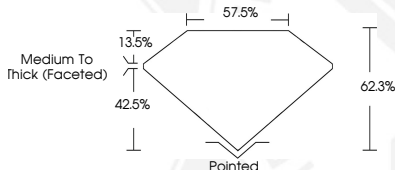
#### ADDITIONAL GRADING INFORMATION

Polish EXCELLENT  
Symmetry EXCELLENT  
Fluorescence NONE  
Inscription(s) LABGROWN IGI LG537246739

Comments: As Grown - No indication of post-growth treatment.  
This Laboratory Grown Diamond was created by High Pressure High Temperature (HPHT) growth process.



**LASERSCRIBE** SM  
Sample Images Used



#### IGI LABORATORY GROWN DIAMOND ID REPORT

August 23, 2022  
IGI Report Number LG537246739  
**PEAR BRILLIANT**  
**6.40 X 3.98 X 2.48 MM**  
Carat Weight 0.43 CARAT  
Color Grade FANCY VIVID BLUE  
Clarity Grade SI 2  
Polish EXCELLENT  
Symmetry EXCELLENT  
Fluorescence NONE  
Inscription(s) LABGROWN IGI LG537246739

Comments: As Grown - No indication of post-growth treatment.  
This Laboratory Grown Diamond was created by High Pressure High Temperature (HPHT) growth process.

#### IGI LABORATORY GROWN DIAMOND ID REPORT

August 23, 2022  
IGI Report Number LG537246739  
**PEAR BRILLIANT**  
**6.40 X 3.98 X 2.48 MM**  
Carat Weight 0.43 CARAT  
Color Grade FANCY VIVID BLUE  
Clarity Grade SI 2  
Polish EXCELLENT  
Symmetry EXCELLENT  
Fluorescence NONE  
Inscription(s) LABGROWN IGI LG537246739

Comments: As Grown - No indication of post-growth treatment.  
This Laboratory Grown Diamond was created by High Pressure High Temperature (HPHT) growth process.



THIS DOCUMENT WAS PRODUCED WITH THE FOLLOWING SECURITY MEASURES: SPECIAL DOCUMENT PAPER, INK SCREENS, WATERMARK, BACKGROUND DESIGN, HOLOGRAM AND OTHER SECURITY FEATURES NOT LISTED AND DO EXCEED DOCUMENT SECURITY INDUSTRY GUIDELINES.

For terms & conditions and to verify this report, please visit [www.igi.org](http://www.igi.org)