



ELECTRONIC COPY

LABORATORY GROWN DIAMOND REPORT

November 3, 2022	
IGI Report Number	LG544249184
Description	LABORATORY GROWN DIAMOND
Shape and Cutting Style	ROUND BRILLIANT
Measurements	6.86 - 6.90 X 4.20 MM

GRADING RESULTS

Carat Weight	1.22 CARAT
Color Grade	H
Clarity Grade	VVS 2
Cut Grade	IDEAL

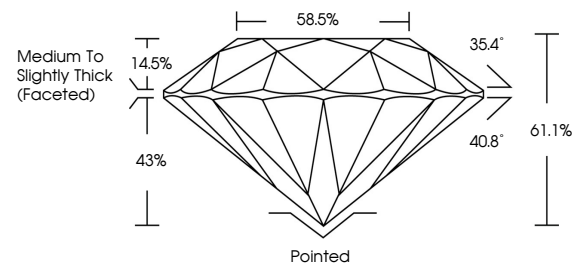
ADDITIONAL GRADING INFORMATION

Polish	EXCELLENT
Symmetry	EXCELLENT
Fluorescence	NONE
Inscription(s)	LABGROWN 151 LG544249184

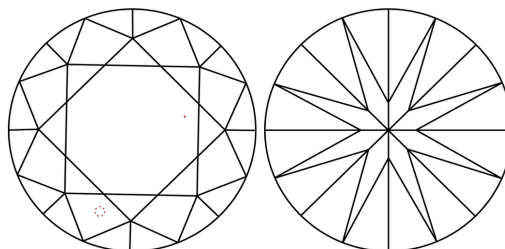
Comments: This Laboratory Grown Diamond was created by Chemical Vapor Deposition (CVD) growth process and may include post-growth treatment.
Type IIa

LG544249184

PROPORTIONS



CLARITY CHARACTERISTICS

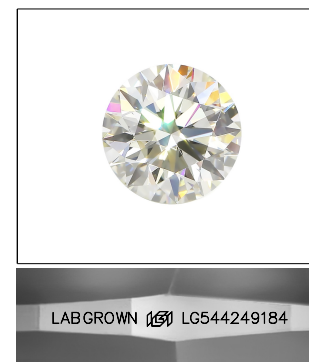


KEY TO SYMBOLS

Red symbols indicate internal characteristics.
Green symbols indicate external characteristics.

GRADING SCALES

COLOR GRADING SCALE	CL		NC		FT		VLT		LT	
	COLORLESS D-F		NEAR COLORLESS G-J		FAINT K-M		VERY LIGHT N-R		LIGHT S-Z	
CLARITY (10x) GRADING SCALE	FL IF		VVS		VS		SI		I	
	FLAWLESS INTERNALLY FLAWLESS		VERY VERY SLIGHTLY INCLUDED		VERY SLIGHTLY INCLUDED		SLIGHTLY INCLUDED		INCLUDED	

LASERSCRIBESM

Sample Image Used



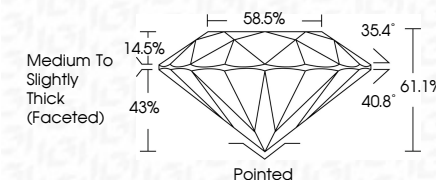
© IGI 2020, International Gemological Institute

FD - 10 20

www.igi.org

LABORATORY GROWN DIAMOND REPORT

November 3, 2022	
IGI Report Number	LG544249184
Description	LABORATORY GROWN DIAMOND
Shape and Cutting Style	ROUND BRILLIANT
Measurements	6.86 - 6.90 X 4.20 MM
GRADING RESULTS	
Carat Weight	1.22 CARAT
Color Grade	H
Clarity Grade	VVS 2
Cut Grade	IDEAL



ADDITIONAL GRADING INFORMATION

Polish	EXCELLENT
Symmetry	EXCELLENT
Fluorescence	NONE
Inscription(s)	LABGROWN (15) LG544249184

Comments: This Laboratory Grown Diamond was created by Chemical Vapor Deposition (CVD) growth process and may include post-growth treatment.
Type IIa



<p>November 3, 2022</p> <p>G/ Report No. LG5462/9184</p> <p>ROUND BRILLIANT</p> <p>1.01 CT. VS2</p> <p>6.50 x 5.86 x 4.20 MM</p>	<p>Carat Weight</p> <p>Color Grade</p> <p>Clarity Grade</p> <p>Cut Grade</p> <p>Depth</p> <p>Table</p> <p>Girdle</p>	<p>1.02 CARAT</p> <p>H</p> <p>VS 2</p> <p>IDEAL</p> <p>61.1%</p> <p>56.5%</p> <p>Medium To Slightly Thick (excellent)</p>	<p>Culet</p> <p>Polish</p> <p>Symmetry</p> <p>Fluorescence</p> <p>Annotations</p>	<p>Painted</p> <p>EXCELLENT</p> <p>EXCELLENT</p> <p>NONE</p> <p>LARGEROWN (69) LG5462/9184</p>	<p>Comments:</p> <p>This Laboratory Grown Diamond was analyzed by the Gemological Institute of America (GIA) using the standard 4C's (Color, Clarity, Cut, and Carat weight) grading process and may include post-growth treatment.</p> <p>Type Ila</p>
---	--	---	---	--	---