



# INTERNATIONAL GEMOLOGICAL INSTITUTE

ELECTRONIC COPY

## LABORATORY GROWN DIAMOND REPORT

LG546230064

### LABORATORY GROWN DIAMOND REPORT

#### IGI LABORATORY GROWN DIAMOND IDENTIFICATION REPORT

November 15, 2022

IGI Report Number

LG546230064

Description

LABORATORY GROWN DIAMOND

Shape and Cutting Style

ROUND BRILLIANT

Measurements

4.25 - 4.26 X 2.70 MM

#### GRADING RESULTS

Carat Weight

0.30 CARAT

Color Grade

FANCY VIVID BLUE

Clarity Grade

I 1

Cut Grade

EXCELLENT

#### ADDITIONAL GRADING INFORMATION

Polish

EXCELLENT

Symmetry

EXCELLENT

Fluorescence

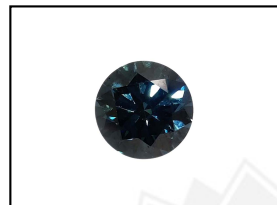
NONE

Inscription(s)

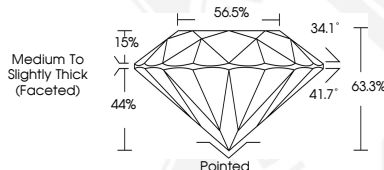
LABGROWN IGI LG546230064

Comments: As Grown - No indication of post-growth treatment.

This Laboratory Grown Diamond was created by High Pressure High Temperature (HPHT) growth process.



**LASERSCRIBE** SM  
Sample Images Used



#### IGI LABORATORY GROWN DIAMOND ID REPORT

November 15, 2022

IGI Report Number **LG546230064**

**ROUND BRILLIANT**

**4.25 - 4.26 X 2.70 MM**

Carat Weight	0.30 CARAT
Color Grade	FANCY VIVID BLUE
Clarity Grade	I 1
Cut Grade	EXCELLENT
Polish	EXCELLENT
Symmetry	EXCELLENT
Fluorescence	NONE
Inscription(s)	LABGROWN IGI LG546230064

Comments: As Grown - No indication of post-growth treatment.

This Laboratory Grown Diamond was created by High Pressure High Temperature (HPHT) growth process.

#### IGI LABORATORY GROWN DIAMOND ID REPORT

November 15, 2022

IGI Report Number **LG546230064**

**ROUND BRILLIANT**

**4.25 - 4.26 X 2.70 MM**

Carat Weight	0.30 CARAT
Color Grade	FANCY VIVID BLUE
Clarity Grade	I 1
Cut Grade	EXCELLENT
Polish	EXCELLENT
Symmetry	EXCELLENT
Fluorescence	NONE
Inscription(s)	LABGROWN IGI LG546230064

Comments: As Grown - No indication of post-growth treatment.

This Laboratory Grown Diamond was created by High Pressure High Temperature (HPHT) growth process.



THIS DOCUMENT WAS PRODUCED WITH THE FOLLOWING SECURITY MEASURES: SPECIAL DOCUMENT PAPER, INK SCREENS, WATERMARK, BACKGROUND DESIGN, HOLOGRAM AND OTHER SECURITY FEATURES NOT LISTED AND DO EXCEED DOCUMENT SECURITY INDUSTRY GUIDELINES.

For terms & conditions and to verify this report, please visit [www.igi.org](http://www.igi.org)