



**ELECTRONIC COPY**

## LABORATORY GROWN DIAMOND REPORT

October 1, 2022	
IGI Report Number	LG549215917
Description	LABORATORY GROWN DIAMOND
Shape and Cutting Style	ROUND BRILLIANT
Measurements	10.89 - 10.92 X 6.57 MM

## GRADING RESULTS

Carat Weight	4.80 CARATS
Color Grade	G
Clarity Grade	VS 1
Cut Grade	IDEAL

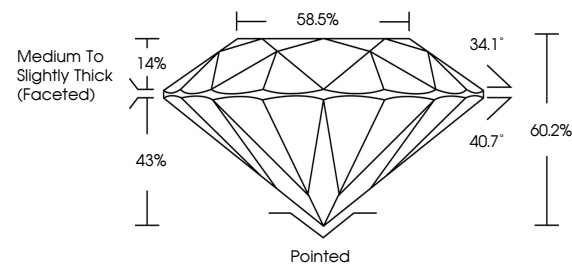
### ADDITIONAL GRADING INFORMATION

Polish	EXCELLENT
Symmetry	EXCELLENT
Fluorescence	NONE
Inscription(s)	LABGROWN IG LG549215917

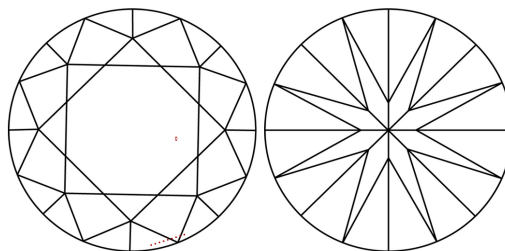
Comments: HEARTS & ARROWS  
This Laboratory Grown Diamond was created by  
Chemical Vapor Deposition (CVD) growth process and  
may include post-growth treatment.  
Type IIa

LG549215917

## PROPORTIONS



## CLARITY CHARACTERISTICS



### KEY TO SYMBOLS

Red symbols indicate internal characteristics.  
Green symbols indicate external characteristics.

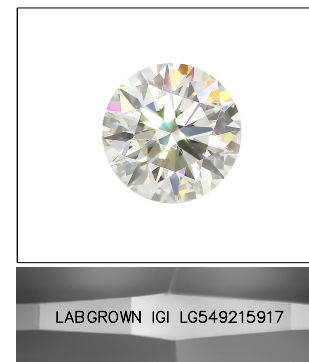


**www.igi.org**

LABORATORY GROWN  
DIAMOND REPORT

## GRADING SCALES

COLOR GRADING SCALE	CL		NC		FT		VLT		LT	
	COLORLESS D-F		NEAR COLORLESS G-J		FAINT K-M		VERY LIGHT N-R		LIGHT S-Z	
CLARITY (10x) GRADING SCALE	FL	IF	VVS		VS		SI		I	
	FLAWLESS INTERNALLY FLAWLESS		VERY VERY SLIGHTLY INCLUDED		VERY SLIGHTLY INCLUDED		SLIGHTLY INCLUDED		INCLUDED	

LASERSCRIBE<sup>SM</sup>

Sample Image Used

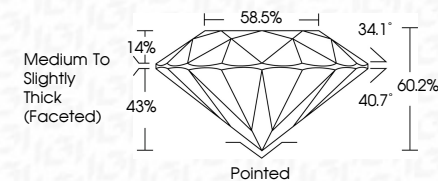


© IGI 2020, International Gemological Institute

FD - 10 20

LABORATORY GROWN DIAMOND REPORT

October 1, 2022	
IGI Report Number	LG549215917
Description	LABORATORY GROWN DIAMOND
Shape and Cutting Style	ROUND BRILLIANT
Measurements	10.89 - 10.92 X 6.57 MM
<b>GRADING RESULTS</b>	
Carat Weight	4.80 CARATS
Color Grade	G
Clarity Grade	VS 1
Cut Grade	IDEAL



### ADDITIONAL GRADING INFORMATION

Polish	EXCELLENT
Symmetry	EXCELLENT
Fluorescence	NONE
Inscription(s)	LABGROWN IGI LG549215917

Comments: HEARTS & ARROWS  
This Laboratory Grown Diamond was created by  
Chemical Vapor Deposition (CVD) growth process and  
may include post-growth treatment.  
Type IIa



October 1, 2022	GIA REPORT # LG54921917	
ROUND BRILLIANT	4.80 CARATS	
10.49 - 10.92 X 6.57 MM	G	
Color	Weight	VS 1 IDEAL 60.2% 56.5% Medium To Slightly Thick (Faceted) Polished EXCELLENT EXCELLENT NONE LAB-GROWN (GIA LG54921917)
Carat Grade	Clarity Grade	
Cut Grade	Cut Grade	
Depth	Table	
Grade		
Quiet	Symmetry	
Polish	Fluorescence	
	Inscriptions(s)	LAB-GROWN (GIA LG54921917)
Comments:		
HEARTS & ARROWS This Laboratory Grown Diamond was grown using the High Pressure High Temperature (HPHT) growth process and may include post-growth treatment. Type Ila		