



ELECTRONIC COPY

LABORATORY GROWN DIAMOND REPORT

| | |
|-------------------------|-----------------------------|
| September 29, 2022 | |
| IGI Report Number | LG549216975 |
| Description | LABORATORY GROWN DIAMOND |
| Shape and Cutting Style | ROUND BRILLIANT |
| Measurements | 8.98 - 9.03 X 5.52 MM |

GRADING RESULTS

| | |
|---------------|-------------|
| Carat Weight | 2.79 CARATS |
| Color Grade | I |
| Clarity Grade | VVS 2 |
| Cut Grade | IDEAL |

ADDITIONAL GRADING INFORMATION

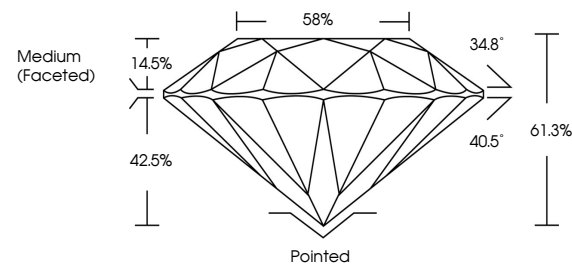
| | |
|--------------|-----------|
| Polish | EXCELLENT |
| Symmetry | EXCELLENT |
| Fluorescence | NONE |

Inscription(s) LABGROWN 163 LG549216975

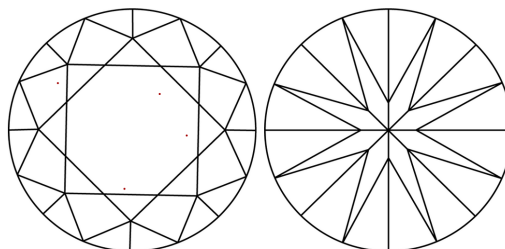
Comments: This Laboratory Grown Diamond was created by Chemical Vapor Deposition (CVD) growth process and may include post-growth treatment.
Type IIa

LG549216975

PROPORTIONS



CLARITY CHARACTERISTICS

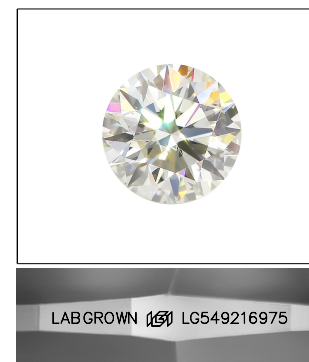


KEY TO SYMBOLS

Red symbols indicate internal characteristics.
Green symbols indicate external characteristics.

GRADING SCALES

| | | | | | | |
|-----------------------------|------------------------------|----|-----------------------------|------------------------|-------------------|-----------|
| COLOR GRADING SCALE | CL | | NC | FT | VLT | LT |
| | COLORLESS D-F | | NEAR COLORLESS G-J | FAINT K-M | VERY LIGHT N-R | LIGHT S-Z |
| CLARITY (10x) GRADING SCALE | FL | IF | VVS | VS | SI | I |
| | FLAWLESS INTERNALLY FLAWLESS | | VERY VERY SLIGHTLY INCLUDED | VERY SLIGHTLY INCLUDED | SLIGHTLY INCLUDED | INCLUDED |

LASERSCRIBESM

Sample Image Used

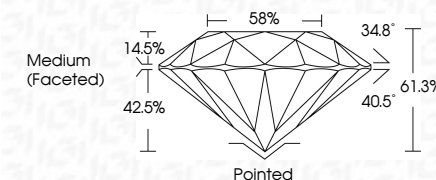


© IGI 2020, International Gemological Institute

FD - 10 20

LABORATORY GROWN DIAMOND REPORT

| | |
|-------------------------|-----------------------------|
| September 29, 2022 | |
| IGI Report Number | LG549216975 |
| Description | LABORATORY GROWN DIAMOND |
| Shape and Cutting Style | ROUND BRILLIANT |
| Measurements | 8.98 - 9.03 X 5.52 MM |
| GRADING RESULTS | |
| Carat Weight | 2.79 CARATS |
| Color Grade | I |
| Clarity Grade | VVS 2 |
| Cut Grade | IDEAL |



ADDITIONAL GRADING INFORMATION

| | |
|----------------|---------------------------|
| Polish | EXCELLENT |
| Symmetry | EXCELLENT |
| Fluorescence | NONE |
| Inscription(s) | LABGROWN (15) LG549216975 |

Comments: This Laboratory Grown Diamond was created by Chemical Vapor Deposition (CVD) growth process and may include post-growth treatment.
Type IIa



| | | | |
|---|--------------------------|-----------------------------|-------------------------------|
| September 29, 2022 | GI Report No. GS49216975 | | |
| ROUND BRILLIANT | | | |
| Wt 0.98 - 0.03 X 5.52 MM | | | |
| Color Weight | 2.79 CARATS | | |
| Clarity Grade | VVS 2 | Culet | POINTED |
| Clarity Grade | IDEAL | Polish | EXCELLENT |
| Cut Grade | 61.3% | Symmetry | EXCELLENT |
| Depth | 58% | Fluorescence | NONE |
| Table | Medium Faceted | Fluorescence Description(s) | LAB-GROWN 99% [GS49216975] |
| Grade | | | |
| Comments: This Laboratory Grown Diamond was created by Chemical Vapor Deposition (CVD) growth process and may include some treatment. See report for details. | | | |
| Yuse Jia | | | |

Comments:
This Laboratory Grown Diamond was created by Chemical Vapor Deposition (CVD) growth process and may include post-growth treatment.