



ELECTRONIC COPY

LABORATORY GROWN DIAMOND REPORT

| | |
|-------------------------|-----------------------------|
| October 11, 2022 | |
| IGI Report Number | LG551272488 |
| Description | LABORATORY GROWN DIAMOND |
| Shape and Cutting Style | ROUND BRILLIANT |
| Measurements | 9.01 - 9.04 X 5.65 MM |

GRADING RESULTS

| | |
|---------------|-------------|
| Carat Weight | 2.85 CARATS |
| Color Grade | J |
| Clarity Grade | VVS 2 |
| Cut Grade | EXCELLENT |

ADDITIONAL GRADING INFORMATION

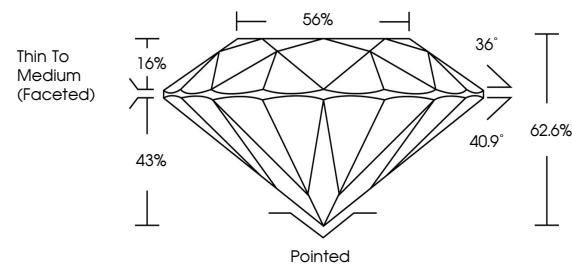
| | |
|--------------|-----------|
| Polish | EXCELLENT |
| Symmetry | EXCELLENT |
| Fluorescence | NONE |

Inscription(s) LABGROWN  LG551272488

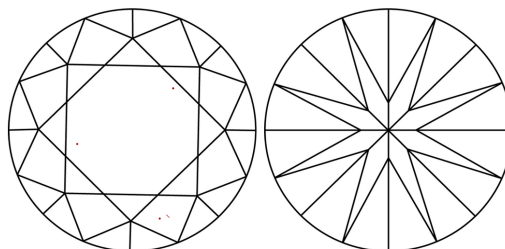
Comments: This Laboratory Grown Diamond was created by Chemical Vapor Deposition (CVD) growth process and may include post-growth treatment.
Type IIa

LG551272488

PROPORTIONS



CLARITY CHARACTERISTICS

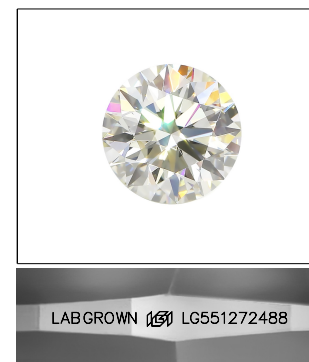


KEY TO SYMBOLS

Red symbols indicate internal characteristics.
Green symbols indicate external characteristics.

GRADING SCALES

| | | | | | | |
|-----------------------------|------------------------------|----|-----------------------------|------------------------|-------------------|-----------|
| COLOR GRADING SCALE | CL | | NC | FT | VLT | LT |
| | COLORLESS D-F | | NEAR COLORLESS G-J | FAINT K-M | VERY LIGHT N-R | LIGHT S-Z |
| CLARITY (10x) GRADING SCALE | FL | IF | VVS | VS | SI | I |
| | FLAWLESS INTERNALLY FLAWLESS | | VERY VERY SLIGHTLY INCLUDED | VERY SLIGHTLY INCLUDED | SLIGHTLY INCLUDED | INCLUDED |

LASERSCRIBESM

Sample Image Used

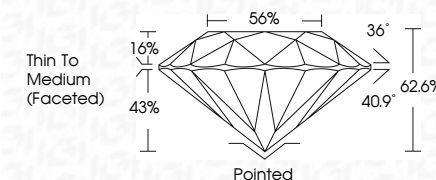


© IGI 2020, International Gemological Institute

FD - 10 20

LABORATORY GROWN DIAMOND REPORT

| | |
|-------------------------|-----------------------------|
| October 11, 2022 | |
| IGI Report Number | LG551272488 |
| Description | LABORATORY GROWN DIAMOND |
| Shape and Cutting Style | ROUND BRILLIANT |
| Measurements | 9.01 - 9.04 X 5.65 MM |
| GRADING RESULTS | |
| Carat Weight | 2.85 CARATS |
| Color Grade | J |
| Clarity Grade | VVS 2 |
| Cut Grade | EXCELLENT |



ADDITIONAL GRADING INFORMATION

| | |
|----------------|---------------------------|
| Polish | EXCELLENT |
| Symmetry | EXCELLENT |
| Fluorescence | NONE |
| Inscription(s) | LABGROWN (15) LG551272488 |

Inscription(s) LABGROWN 151 LG551272488

Comments: This Laboratory Grown Diamond was created by Chemical Vapor Deposition (CVD) growth process and may include post-growth treatment.
Type IIa



| | | | | | | | | |
|------------------|---------------------------|---------------|-----------|-----------|----------------|-----------|-----------------|---|
| October 11, 2022 | GI Report No. LG561272488 | 2.85 CARATS | J | VVS 2 | Polished | None | LAGROWN (lgf) | This Laboratory Grown Diamond was created by Chemical Vapor Deposition (CVD) growth process and may include surface treatment. Type I _a |
| SOUND BRILLIANT | 0.01 - 0.04 X 5.65 MM | | | EXCELLENT | EXCELLENT | EXCELLENT | LAGROWN (lgf) | |
| | | | | 62.9% | 56% | | LG561272488 | |
| | | | | | Thin To Medium | | | |
| | | | | | (faceted) | | | |
| | Color Grade | Clarity Grade | Cut Grade | Depth | Table | Girdle | Symmetry | Fluorescence |
| | | | | | | | Inscriptions(s) | Comments: |
| | | | | | | | | |

Comments:
This Laboratory Grown Diamond was generated by Chemical Vapor Deposition (CVD) growth process and may include post-growth treatment.