



ELECTRONIC COPY

LABORATORY GROWN DIAMOND REPORT

October 15, 2022	
IGI Report Number	LG551286124
Description	LABORATORY GROWN DIAMOND
Shape and Cutting Style	ROUND BRILLIANT
Measurements	9.13 - 9.16 X 5.75 MM

GRADING RESULTS

Carat Weight	3.00 CARATS
Color Grade	I
Clarity Grade	SI 1
Cut Grade	EXCELLENT

ADDITIONAL GRADING INFORMATION

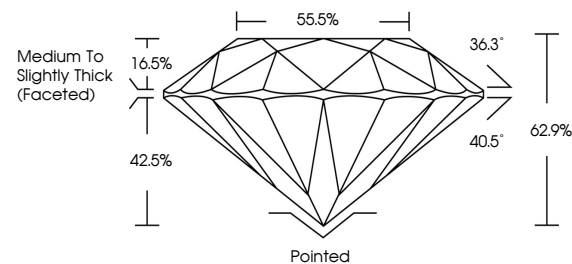
Polish	EXCELLENT
Symmetry	EXCELLENT
Fluorescence	NONE

Inscription(s) LABGROWN LG551286124

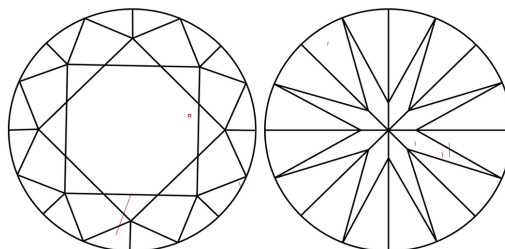
Comments: This Laboratory Grown Diamond was created by Chemical Vapor Deposition (CVD) growth process and may include post-growth treatment.
Type IIa

LG551286124

PROPORTIONS



CLARITY CHARACTERISTICS

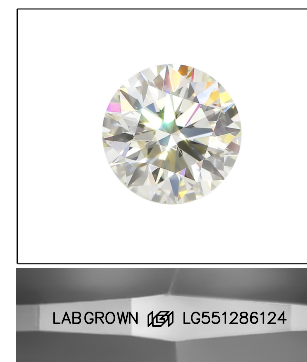


KEY TO SYMBOLS

Red symbols indicate internal characteristics.
Green symbols indicate external characteristics.

GRADING SCALES

COLOR GRADING SCALE	CL		NC	FT	VLT	LT
	COLORLESS D-F		NEAR COLORLESS G-J	FAINT K-M	VERY LIGHT N-R	LIGHT S-Z
CLARITY (10x) GRADING SCALE	FL	IF	VVS	VS	SI	I
	FLAWLESS INTERNALLY FLAWLESS		VERY VERY SLIGHTLY INCLUDED	VERY SLIGHTLY INCLUDED	SLIGHTLY INCLUDED	INCLUDED

LASERSCRIBESM

Sample Image Used

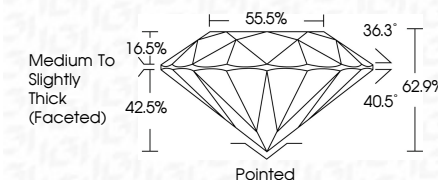


© IGI 2020, International Gemological Institute

FD - 10 20

LABORATORY GROWN DIAMOND REPORT

October 15, 2022	
IGI Report Number	LG551286124
Description	LABORATORY GROWN DIAMOND
Shape and Cutting Style	ROUND BRILLIANT
Measurements	9.13 - 9.16 X 5.75 MM
GRADING RESULTS	
Carat Weight	3.00 CARATS
Color Grade	I
Clarity Grade	SI 1
Cut Grade	EXCELLENT



ADDITIONAL GRADING INFORMATION

Polish	EXCELLENT
Symmetry	EXCELLENT
Fluorescence	NONE
Inscription(s)	LABGROWN (15) LG551286124

Comments: This Laboratory Grown Diamond was created by Chemical Vapor Deposition (CVD) growth process and may include post-growth treatment.
Type IIa



October 15, 2022	Color Grade	3.00 CARATS	1
G/ Report No. LG551285124	Clarity Grade	SI 1	
YOUNG BRILLIANT	Cut Grade	EXCELLENT	
ROUND	Depth	62.9%	
13 - 13 - 9.16 x 5.75 MM	Table	55.6%	
	Girdle	Medium to Slightly Thick (faceted)	
	Culet	Pointed	
	Polish	EXCELLENT	
	Symmetry	EXCELLENT	
	Fluorescence	NONE	
	Inscriptions	LASERGROWN LG551285124	
	Comments:	The Laboratory Grown Diamond was created by Chemical Vapor Deposition (CVD) and may include post-growth treatment. Type Ila	

Comments:
This Laboratory Grown Diamond was created by Chemical Vapor Deposition (CVD) growth process and may include post-growth treatment.