



INTERNATIONAL GEMOLOGICAL INSTITUTE

ELECTRONIC COPY

LABORATORY GROWN DIAMOND REPORT

LG553257399

LABORATORY GROWN DIAMOND REPORT

IGI LABORATORY GROWN DIAMOND IDENTIFICATION REPORT

November 28, 2022

IGI Report Number LG553257399

Description LABORATORY GROWN DIAMOND

Shape and Cutting Style ROUND BRILLIANT

Measurements 4.48 - 4.50 X 2.69 MM

GRADING RESULTS

Carat Weight 0.33 CARAT

Color Grade FANCY INTENSE BLUE

Clarity Grade VVS 1

Cut Grade IDEAL

ADDITIONAL GRADING INFORMATION

Polish EXCELLENT

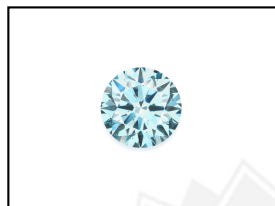
Symmetry EXCELLENT

Fluorescence NONE

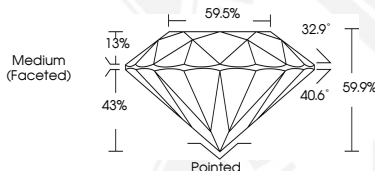
Inscription(s) LABGROWN (IGI) LG553257399

Comments: As Grown - No indication of post-growth treatment.

This Laboratory Grown Diamond was created by High Pressure High Temperature (HPHT) growth process.



LASERSCRIBESM
Sample Images Used



IGI LABORATORY GROWN DIAMOND ID REPORT

November 28, 2022

IGI Report Number LG553257399

ROUND BRILLIANT

4.48 - 4.50 X 2.69 MM

Carat Weight 0.33 CARAT

Color Grade FANCY INTENSE BLUE

Clarity Grade VVS 1

Cut Grade IDEAL

Polish EXCELLENT

Symmetry EXCELLENT

Fluorescence NONE

Inscription(s) LABGROWN (IGI) LG553257399

Comments: As Grown - No

indication of post-growth

treatment.

This Laboratory Grown Diamond

was created by High Pressure High

Temperature (HPHT) growth

process.

IGI LABORATORY GROWN DIAMOND ID REPORT

November 28, 2022

IGI Report Number LG553257399

ROUND BRILLIANT

4.48 - 4.50 X 2.69 MM

Carat Weight 0.33 CARAT

Color Grade FANCY INTENSE BLUE

Clarity Grade VVS 1

Cut Grade IDEAL

Polish EXCELLENT

Symmetry EXCELLENT

Fluorescence NONE

Inscription(s) LABGROWN (IGI) LG553257399

Comments: As Grown - No

indication of post-growth

treatment.

This Laboratory Grown Diamond

was created by High Pressure High

Temperature (HPHT) growth

process.



THIS DOCUMENT WAS PRODUCED WITH THE FOLLOWING SECURITY MEASURES: SPECIAL DOCUMENT PAPER, INK SCREENS, WATERMARK, BACKGROUND DESIGN, HOLOGRAM AND OTHER SECURITY FEATURES NOT LISTED AND DO EXCEED DOCUMENT SECURITY INDUSTRY GUIDELINES.

For terms & conditions and to verify this report, please visit www.igi.org