



ELECTRONIC COPY

LABORATORY GROWN DIAMOND REPORT

February 2, 2023	
IGI Report Number	LG564348314
Description	LABORATORY GROWN DIAMOND
Shape and Cutting Style	ROUND BRILLIANT
Measurements	7.94 - 7.97 X 4.84 MM

GRADING RESULTS

Carat Weight	1.87 CARAT
Color Grade	G
Clarity Grade	VVS 1
Cut Grade	IDEAL

ADDITIONAL GRADING INFORMATION

Polish	VERY GOOD
Symmetry	EXCELLENT
Fluorescence	NONE

Inscription(s) LABGROWN  LG564348314

Comments: As Grown - No indication of post-growth treatment.

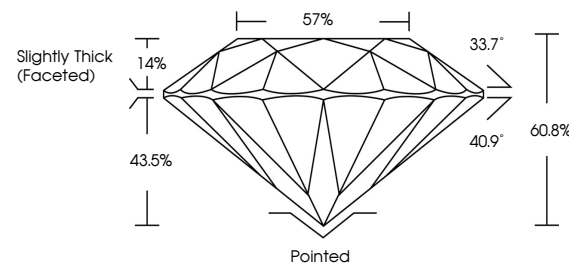
This Laboratory Grown Diamond was created by Chemical Vapor Deposition (CVD) growth process.

LABORATORY GROWN DIAMOND REPORT

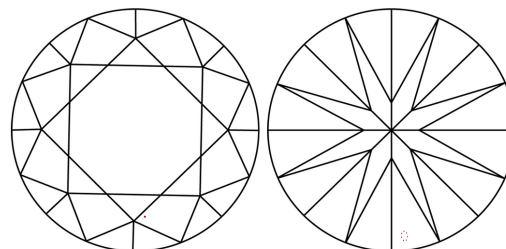
LG564348314

Report verification at igi.org

PROPORTIONS



CLARITY CHARACTERISTICS



KEY TO SYMBOLS

Red symbols indicate internal characteristics.
Green symbols indicate external characteristics.

LABORATORY GROWN
DIAMOND REPORT

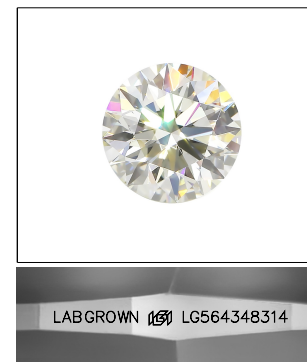
GRADING SCALES

CLARITY

IF	VVS ¹⁻²	VS ¹⁻²	SI ¹⁻²	I ¹⁻³
Internally Flawless	Very Very Slightly Included	Very Slightly Included	Slightly Included	Included

COLOR

D E F G H I J Faint Very Light Light

LASERSCRIBESM

Sample Image Used

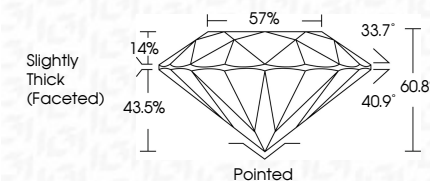


© IGI 2020, International Gemological Institute

FD - 10 20



February 2, 2023	
IGI Report Number	LG564348314
Description	LABORATORY GROWN DIAMOND
Shape and Cutting Style	ROUND BRILLIANT
Measurements	7.94 - 7.97 X 4.84 MM
GRADING RESULTS	
Carat Weight	1.87 CARAT
Color Grade	G
Clarity Grade	VVS 1
Cut Grade	IDEAL



ADDITIONAL GRADING INFORMATION

Polish	VERY GOOD
Symmetry	EXCELLENT
Fluorescence	NONE
Inscription(s)	LABGROWN (157) LG564348314

Comments: As Grown - No indication of post-growth treatment.
This Laboratory Grown Diamond was created by Chemical Vapor Deposition (CVD) growth process.

February 2, 2023	Carat Weight	1.87 CARAT
Lab Report No LS564348314	Color Grade	WVS 1
ROUND BRILLIANT	Clarity Grade	IDEAL
	Cut Grade	50.8%
	Depth	57%
	Table	slightly Thick (Faceted)
7.94 - 7.97 X 4.84 MM	Grade	Painted
	Culet	VERY GOOD
	Pavil	EXCELLENT
	Symmetry	NONE
	Fluorescence	LARGE/OWN (see LS564348314)
	Inclusions(?)	
Comments:	Grown - No Indication of post-growth treatment.	
	Is Laboratory Grown Diamond was created by Chemical Vapor Deposition	