



**INTERNATIONAL  
GEMOLOGICAL  
INSTITUTE**

**ELECTRONIC COPY**

## LABORATORY GROWN DIAMOND REPORT

|                         |                             |
|-------------------------|-----------------------------|
| February 6, 2023        |                             |
| IGI Report Number       | LG567357904                 |
| Description             | LABORATORY GROWN<br>DIAMOND |
| Shape and Cutting Style | ROUND BRILLIANT             |
| Measurements            | 10.57 - 10.61 X 6.55 MM     |

## GRADING RESULTS

|               |             |
|---------------|-------------|
| Carat Weight  | 4.56 CARATS |
| Color Grade   | I           |
| Clarity Grade | VS 2        |
| Cut Grade     | IDEAL       |

### ADDITIONAL GRADING INFORMATION

|              |           |
|--------------|-----------|
| Polish       | EXCELLENT |
| Symmetry     | EXCELLENT |
| Fluorescence | NONE      |

Inscription(s)  LG567357904

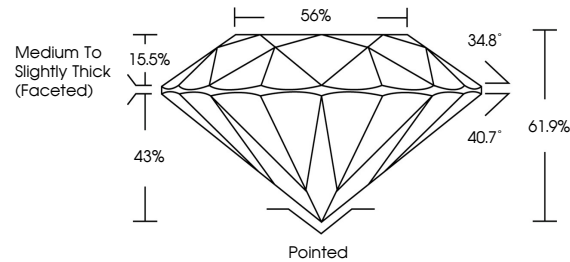
Comments: This Laboratory Grown Diamond was created by Chemical Vapor Deposition (CVD) growth process and may include post-growth treatment.  
Type IIa

## LABORATORY GROWN DIAMOND REPORT

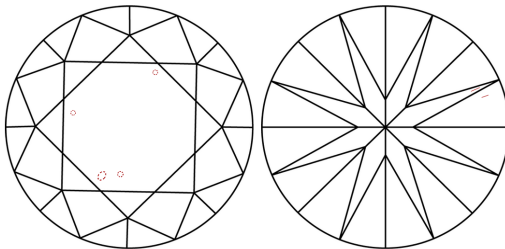
LG567357904

Report verification at [igi.org](http://igi.org)

## PROPORTIONS



## CLARITY CHARACTERISTICS



## KEY TO SYMBOLS

Red symbols indicate internal characteristics.  
Green symbols indicate external characteristics.

LABORATORY GROWN  
DIAMOND REPORT

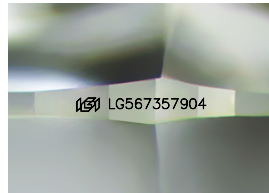
## GRADING SCALES

## CLARITY

| IF                  | VVS <sup>1-2</sup>          | VS <sup>1-2</sup>      | SI <sup>1-2</sup> | I <sup>1-3</sup> |
|---------------------|-----------------------------|------------------------|-------------------|------------------|
| Internally Flawless | Very Very Slightly Included | Very Slightly Included | Slightly Included | Included         |

**COLOR**

D E F G H I J Faint Very Light Light



Sample Image Used



© IGI 2020, International Gemological Institute

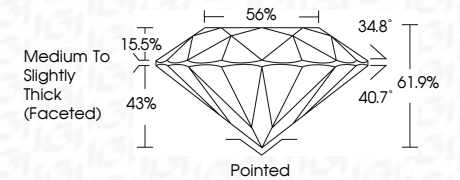
FD - 10 20

## LABORATORY GROWN DIAMOND REPORT

|                         |                             |
|-------------------------|-----------------------------|
| February 6, 2023        |                             |
| IGI Report Number       | LG567357904                 |
| Description             | LABORATORY GROWN<br>DIAMOND |
| Shape and Cutting Style | ROUND BRILLIANT             |
| Measurements            | 10.57 - 10.61 X 6.55 MM     |

## GRADING RESULTS

|               |             |
|---------------|-------------|
| Carat Weight  | 4.56 CARATS |
| Color Grade   | I           |
| Clarity Grade | VS 2        |
| Cut Grade     | IDEAL       |



### ADDITIONAL GRADING INFORMATION

|                |   |
|----------------|---|
| Polish         | EXCELLENT   |
| Symmetry       | EXCELLENT   |
| Fluorescence   | NONE  |
| Inscription(s) |  LG567357904 |

Comments: This Laboratory Grown Diamond was created by Chemical Vapor Deposition (CVD) growth process and may include post-growth treatment.  
Type IIa



IGI

|  |                                 |  |
|--|---------------------------------|--|
| February 6, 2023   | 4.65 CARATS                     |  |
| (G) Report No LG567357904  | VS 2                            |  |
| ROUND BRILLIANT  | IDEAL                           |  |
|  | 61.9%                           |  |
|  | 56%                             |  |
|  | Medium To Slightly Thick Facets |  |
|  | Painted                         |  |
|  | EXCELLENT                       |  |
|  | EXCELLENT                       |  |
|  | NONE                            |  |
|  | (09) LG567357904                |  |
| <p><b>Comments:</b></p> <p>This Laboratory Grown Diamond was created by Chemical Vapor Deposition (CVD) and may include post-growth treatment.</p> <p>type IIG</p> |                                 |  |

**Comments:**  
This Laboratory Grown Diamond was created by Chemical Vapor Deposition (CVD) growth process and may include post-growth treatment.  
type IIa