



ELECTRONIC COPY

LABORATORY GROWN DIAMOND REPORT

February 21, 2023	
IGI Report Number	LG570338551
Description	LABORATORY GROWN DIAMOND
Shape and Cutting Style	ROUND BRILLIANT
Measurements	9.79 - 9.85 X 6.04 MM

GRADING RESULTS

Carat Weight	3.63 CARATS
Color Grade	G
Clarity Grade	VS 1
Cut Grade	IDEAL

ADDITIONAL GRADING INFORMATION

Polish	EXCELLENT
Symmetry	EXCELLENT
Fluorescence	NONE
Inscription(s)	 LG570338551

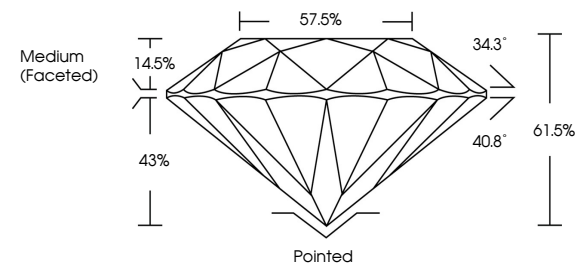
Comments: HEARTS & ARROWS
This Laboratory Grown Diamond was created by
Chemical Vapor Deposition (CVD) growth process and
may include post-growth treatment.
Type IIa

LABORATORY GROWN DIAMOND REPORT

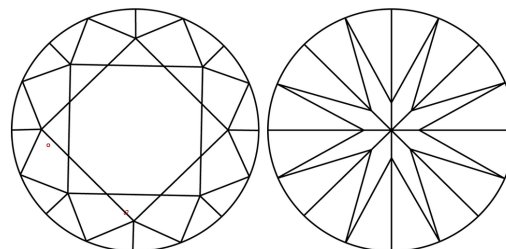
LG570338551

Report verification at igi.org

PROPORTIONS

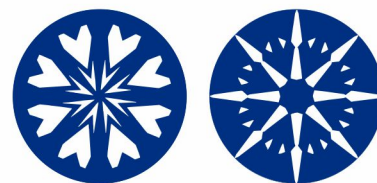


CLARITY CHARACTERISTICS



KEY TO SYMBOLS

Red symbols indicate internal characteristics.
Green symbols indicate external characteristics.



www.igi.org

LABORATORY GROWN
DIAMOND REPORT

GRADING SCALES

CLARITY

IF	VVS ¹⁻²	VS ¹⁻²	SI ¹⁻²	I ¹⁻³
Internally Flawless	Very Very Slightly Included	Very Slightly Included	Slightly Included	Included

COLOR

D E F G H I J Faint Very Light Light



Sample Image Used

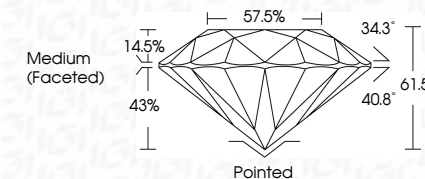


© IGI 2020, International Gemological Institute

FD - 10 20



February 21, 2023	
IGI Report Number	LG570338551
Description	LABORATORY GROWN DIAMOND
Shape and Cutting Style	ROUND BRILLIANT
Measurements	9.79 - 9.85 X 6.04 MM
GRADING RESULTS	
Carat Weight	3.63 CARATS
Color Grade	G
Clarity Grade	VS 1
Cut Grade	IDEAL



ADDITIONAL GRADING INFORMATION

Polish	EXCELLENT
Symmetry	EXCELLENT
Fluorescence	NONE
Inscription(s)	 LG570338551
Comments: HEARTS & ARROWS	
This Laboratory Grown Diamond was created by Chemical Vapor Deposition (CVD) growth process and may include post-growth treatment.	
Type IIa	

February 21, 2023
ICI Report No LG570338551
ROUND BRILLIANT

9.79 - 9.85 X 6.04 MM

9.79 - 9.85 X 6.04 MM
Carat Weight
Color Grade
3.63 CARATS
G

Clarity Grade	VS 1
Cut Grade	IDEAL
Depth	61.5%
Table	57.5%
Girdle	Medium (Faceted)

	Pointed	EXCELLENT	EXCELLENT	NONE
Culet				
Polish				
Symmetry				
Fluorescence				
Inscriptions(s)				

Comments:
HEARTS & ARROWS
This Laboratory Grown Diamond was
created by Chemical Vapor Deposition
(CVD) growth process and may include
post-growth treatment.